

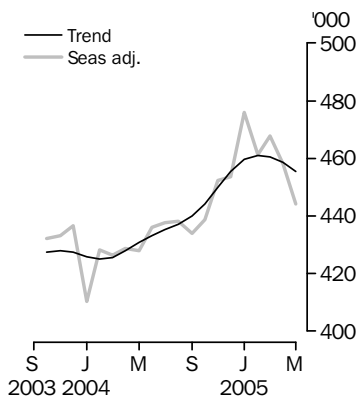
OVERSEAS ARRIVALS AND DEPARTURES

AUSTRALIA

EMBARGO: 11.30AM (CANBERRA TIME) WED 6 JUL 2005

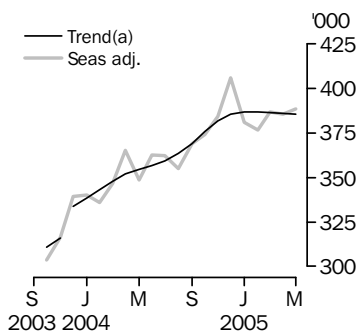
Visitor arrivals

Short-term



Resident departures

Short-term



(a) Break in trend series from December 2003.

KEY FIGURES

	May '05	Apr '05 to May '05 % change	May '04 to May '05 % change
	'000		
Short-term visitor arrivals			
Trend	455.5	-0.7	5.8
Seasonally adjusted	444.2	-3.0	..
Original	353.9
Short-term resident departures			
Trend	385.6	-0.1	8.7
Seasonally adjusted	388.7	0.8	..
Original	395.8

.....

.. not applicable

KEY POINTS

TREND ESTIMATES

- The trend estimate for short-term visitor arrivals to Australia during May 2005 (455,500 movements) decreased by 0.7% compared with April 2005. This followed monthly decreases of 0.1% for March 2005 and 0.4% for April 2005.
- Currently, short-term visitor arrivals are 1.2% lower than when the series last peaked in February 2005 (461,100 movements) and 5.8% higher than in May 2004.
- During May 2005, short-term resident departures (385,600 movements) decreased by 0.1% when compared with April 2005. This followed monthly decreases of 0.1% for March 2005 and a minimal decrease in April 2005.
- Currently, short-term resident departures are 0.4% lower than when the series last peaked in January 2005 (387,000 movements) and 8.7% higher than in May 2004.

SEASONALLY ADJUSTED ESTIMATES

- The seasonally adjusted estimate for short-term visitor arrivals during May 2005 (444,200 movements) decreased by 3.0% compared with April 2005. Short-term visitor arrivals increased by 1.4% for March and decreased by 2.1% for April 2005.
- Short-term resident departures for May 2005 (388,700 movements) increased by 0.8% compared with April 2005 and followed an increase of 2.7% for March and a decrease of 0.3% for April 2005.

ORIGINAL ESTIMATES

- In original movement terms, there were 353,900 short-term visitor arrivals to Australia and 395,800 short-term resident departures from Australia during May 2005.

INQUIRIES

For further information about these and related statistics, contact the National Information and Referral Service on 1300 135 070 or Anne Ward on Canberra (02) 6252 6871.

NOTES

FORTHCOMING ISSUES

ISSUE	RELEASE DATE
June 2005	4 August 2005
July 2005	1 September 2005
August 2005	6 October 2005
September 2005	7 November 2005
October 2005	5 December 2005
November 2005	12 January 2006



EARLY ESTIMATES

Early estimates of short-term visitor arrivals for June 2005 will be available on the Australian Bureau of Statistics (ABS) web site on 14 July 2005. These estimates can be accessed by going to the AusStats web page <<http://www.abs.gov.au/ausstats>> and selecting Publications & Data and then Main Features. Select 34 Migration and then select *Short-term Visitor Arrival Estimates, Australia* (cat. no. 3401.0.55.001).

DATA NOTES

This publication contains movement data. Care should be taken when interpreting this movement data as 'people'. See paragraph 5 of the Explanatory Notes for more detail.

Calculations of percentage and numeric change are based on unrounded data. See paragraph 12 of the Explanatory Notes for more detail.

CHANGES IN THIS ISSUE

There are no changes in this issue.

FORTHCOMING CHANGES

From 4 August 2005 time series spreadsheets released in association with this product will be presented in Excel format. Please refer to the *Information Paper: Overseas Arrivals and Departures, Australia, New Format Time Series Spreadsheets* (cat. no. 3401.0.55.003) for further detail, including 'mock-up' tables in the new format.



ABBREVIATIONS

DIMIA	Australian Government Department of Immigration & Multicultural & Indigenous Affairs
NZ	New Zealand
OAD	overseas arrivals and departures
SARS	Severe Acute Respiratory Syndrome
TRIPS	Travel and Immigration Processing System

Susan Linacre
Acting Australian Statistician

MAIN FEATURES

SHORT-TERM VISITOR ARRIVALS

In trend terms, short-term visitor arrivals to Australia in May 2005 (455,500 movements) have increased by 5.8% when compared with May 2004. Currently, short-term visitor arrivals are 1.2% lower than when the series last peaked in February 2005 (461,100 movements). Prior to that month, short-term visitor arrivals had increased each month from February 2004 (425,100 movements).

The following table presents the top ten source countries (based on original estimates) for short-term visitor arrivals during May 2005. Seasonally adjusted and trend estimates are also presented for these countries, along with the trend percentage change compared with April 2005 and May 2004.

SHORT-TERM VISITOR ARRIVALS, Major Source Countries—May 2005

	<i>Trend</i>	<i>Seasonally Adjusted</i>	<i>Original</i>	<i>Apr 05 to May 05</i>	<i>May 04 to May 05</i>
	'000	'000	'000	Trend % change	Trend % change
New Zealand	96.8	96.7	82.6	1.3	13.1
Japan	51.7	48.3	43.1	-4.6	-8.0
United States of America	37.9	37.0	30.3	-0.2	3.5
United Kingdom	59.3	55.8	29.0	-1.0	2.9
Singapore	23.2	22.6	22.3	0.2	14.7
Malaysia	14.0	14.6	19.0	-0.7	-3.3
Korea	22.2	21.8	18.1	2.1	25.9
China	20.1	(a)np	15.9	-3.9	1.6
Hong Kong	13.1	13.3	9.2	0.9	17.0
Taiwan	9.3	8.0	8.3	-1.1	12.2

(a) Seasonally adjusted data for short-term visitor arrivals from China is of an unpublished standard.

SHORT-TERM RESIDENT DEPARTURES

In trend terms, short-term resident departures have increased by 8.7% between May 2004 and May 2005. Currently, short-term resident departures are 0.4% lower than when the series last peaked in January 2005 (387,000 movements). Prior to that month, short-term resident departures had increased each month from April 2003 (285,700 movements).

The following table presents the top ten destinations (based on original estimates), for short-term resident departures during May 2005. Seasonally adjusted and trend estimates are also presented for these countries, along with the trend percentage change compared with April 2005 and May 2004.

MAIN FEATURES *continued*

SHORT-TERM RESIDENT DEPARTURES *continued*

SHORT-TERM RESIDENT DEPARTURES, Major Destinations—May 2005

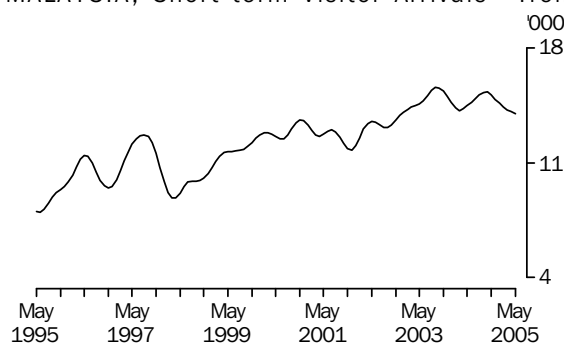
	<i>Trend</i>	<i>Seasonally Adjusted</i>	<i>Original</i>	<i>Apr 05 to May 05</i>	<i>May 04 to May 05</i>
	'000	'000	'000	Trend % change	Trend % change
New Zealand	69.1	70.0	51.6	-0.5	4.4
United Kingdom	32.4	33.2	49.2	1.0	3.3
United States of America	33.9	33.1	36.4	-0.3	6.4
Indonesia	30.4	29.2	26.1	-1.6	5.8
China	19.7	19.3	17.0	1.3	35.2
Fiji	16.4	16.3	14.1	-0.4	17.5
Hong Kong	15.0	15.3	13.1	0.6	28.4
Italy	7.2	8.2	13.0	2.2	-0.5
Singapore	14.2	14.1	12.9	-2.8	15.1
Canada	7.3	8.2	11.9	2.5	12.7

SHORT-TERM TRAVEL — MALAYSIA AND AUSTRALIA

Short-term visitor arrivals

According to trend estimates, in May 2005, the number of short-term visitor arrivals from Malaysia represented 3% (14,000 movements) of all short-term visitor arrivals to Australia. Over the past ten years the trend has fluctuated with the series rising from a low in June 1995 (8,000 movements) to a high in September 2003 (15,600 movements). The May 2005 trend estimate for arrivals from Malaysia decreased by 1% when compared with April 2005 and by 3% when compared with May 2004.

MALAYSIA, Short-term Visitor Arrivals—Trend Series



In original terms, 61% of the visitors from Malaysia in May 2005 stated holiday as the main reason for journey, compared with 52% of all short-term visitor arrivals. The median age of visitors from Malaysia was 36 years (40 years for all visitors) while the median intended duration of stay was 9 days (8 days for all visitors).

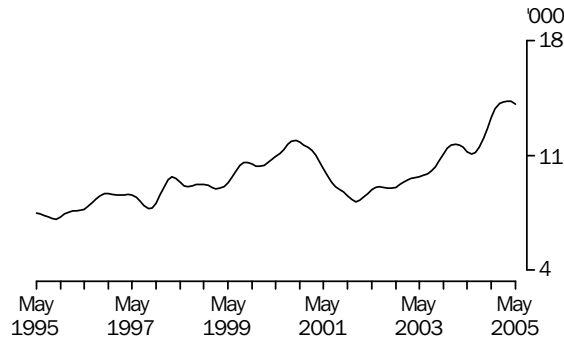
Short-term resident departures

Trend estimates show that the number of residents departing Australia short-term for Malaysia represented 4% (14,100 movements) of all short-term resident departures in May 2005. Over the past ten years there have been fluctuations in the series but from January 2002 the trend has been mainly upwards. The series was at its lowest point in October 1995 (7,100 movements) and at its highest point in April 2005 (14,300 movements). The May 2005 trend estimate for short-term resident departures to Malaysia decreased by 1% when compared with April 2005 and increased by 26% when compared with May 2004.

MAIN FEATURES *continued*

Short-term resident
departures *continued*

MALAYSIA, Short-term Resident Departures—Trend Series



In original terms, 38% of Australian residents departing to Malaysia stated holiday as the main reason for journey, compared with 45% for all residents departing. The median age of residents departing to Malaysia was 48 years (46 years for all residents) and the median intended duration of stay was 13 days (18 days for all residents).

PERMANENT AND
LONG-TERM MOVEMENTS

There were 9,940 permanent (settler) arrivals into Australia during May 2005, an increase of 2.6% when compared with May 2004 (9,690 movements). Settlers born in New Zealand accounted for the largest proportion (15%) followed by the United Kingdom (14%) and India (8%).

Statistics on overseas arrivals and departures relate to the number of movements of travellers rather than the number of travellers. Therefore, care should be taken when using long-term movements data as it is known some individuals who travel multiple times in a year are counted each time they cross Australia's borders (see paragraph 5 of the Explanatory Notes). Long-term movements in this publication are not an appropriate source of migration statistics. For further information refer to *Australian Demographic Statistics* (cat. no. 3101.0).

There were 4,790 Australian residents departing permanently from Australia during May 2005, an increase of 3.0% when compared with May 2004 (4,650 movements).

STATISTICAL
SIGNIFICANCE

The above presentation of movements in estimates does not take into account whether the change in movement is statistically significant. Care should be taken when interpreting the impact of numeric and/or percentage change. Please see the Standard Errors section of this issue for more detail.

SEASONALLY ADJUSTED AND TREND ESTIMATES

INTRODUCTION

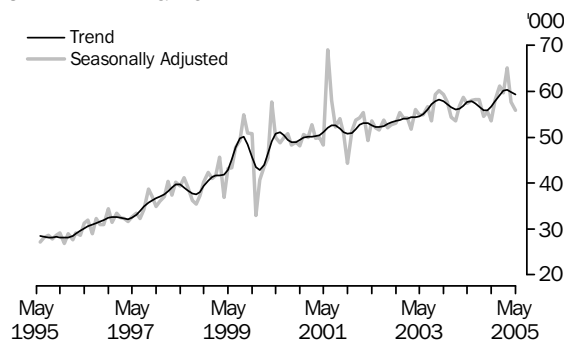
Seasonally adjusted and trend estimates add to the understanding of Overseas Arrivals and Departures (OAD) statistics. Seasonally adjusted estimates allow users to analyse short-term movements including irregular impacts on the series, while trend estimates provide a better method to analyse and monitor the underlying direction of the short-term movement series. In most cases, the trend series is the best source of information on the long-term direction of these statistics.

SHORT-TERM VISITOR ARRIVALS

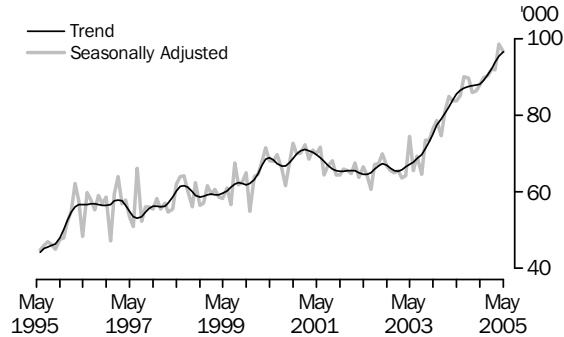
Selected source countries

The graphs presented below illustrate the long-term increase in the trend series for arrivals from the United Kingdom and New Zealand and the significant impact of Severe Acute Respiratory Syndrome (SARS) on arrivals from Japan earlier in 2003.

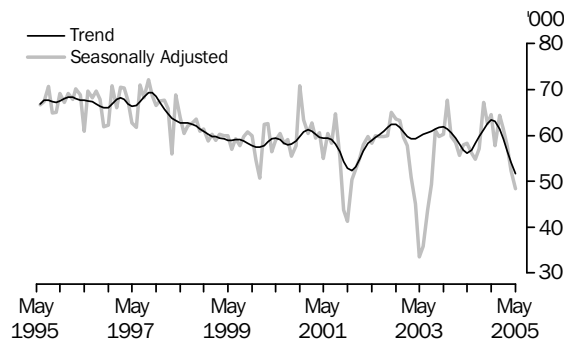
UNITED KINGDOM



NEW ZEALAND



JAPAN



SHORT-TERM RESIDENT DEPARTURES

Selected destinations

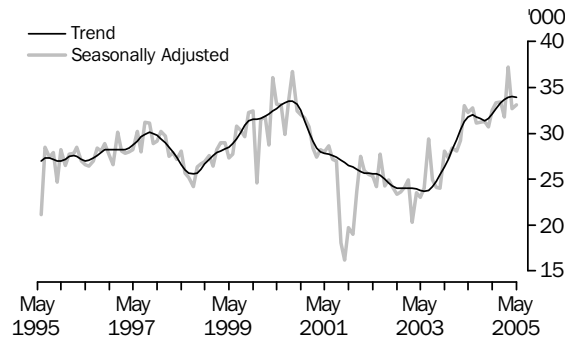
For residents departing to the United States of America the graph illustrates the effect that the terrorist attacks in that country on 11 September 2001 had on short-term departures of Australian residents to the United States of America. The graph for New Zealand illustrates that departures of Australian residents, which had been trending

SEASONALLY ADJUSTED AND TREND ESTIMATES *continued*

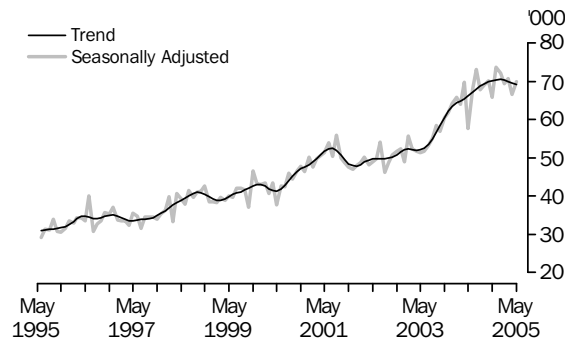
*Selected destinations
continued*

upwards since May 2003, appear to have stalled. For Indonesia the graph shows a return to expected resident departures levels after the influence of the Indian Ocean tsunami of 26 December 2004.

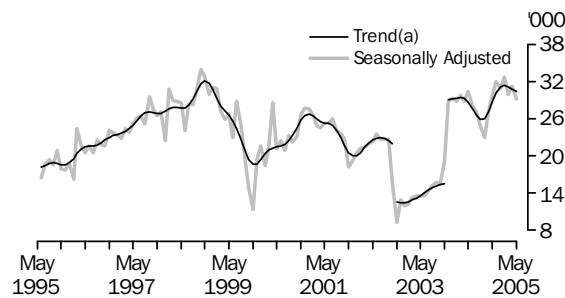
UNITED STATES OF AMERICA



NEW ZEALAND



INDONESIA



(a) Break in trend series from Oct 2002 and from Dec 2003.

TOTAL MOVEMENT, ARRIVALS—Category of Movement

	PERMANENT		LONG-TERM		Total permanent and long-term arrivals	SHORT-TERM(a)				Total arrivals(a)	
	Settlers	no.	Australian residents	Overseas visitors		Australian residents	Overseas visitors (Original)	Overseas visitors	Overseas visitors		no.
								(Seasonally Adjusted)(b)	(Trend)(c)		
					'000	'000	'000	'000	'000		
Calendar years											
2002	89 350		92 400	180 240	361 990	3 394.9	4 841.2	8 598.1	
2003	103 890		98 840	185 730	388 450	3 330.8	4 745.9	8 465.1	
2004	117 470		98 240	196 850	412 560	4 278.9	5 215.0	9 906.4	
Financial years											
2001–02	88 900		88 600	175 870	353 370	3 345.0	4 768.3	8 466.6	
2002–03	93 910		95 780	184 100	373 790	3 309.9	4 655.8	8 339.4	
2003–04	111 590		98 400	191 330	401 320	3 813.3	5 057.2	9 271.8	
2004(d)											
March	9 330		7 180	13 910	30 420	291.3	432.3	426.5	425.7	754.0	
April	9 440		7 080	11 720	28 250	339.5	402.8	428.7	428.0	770.6	
May	9 690		5 680	8 750	24 120	305.8	341.3	427.9	430.7	671.2	
June	10 060		6 880	10 680	27 630	310.8	367.3	436.1	433.3	705.7	
July	10 200		8 090	30 460	48 750	431.8	472.0	437.8	435.2	952.6	
August	10 650		7 010	12 190	29 850	349.3	405.8	438.2	437.1	784.9	
September	10 180		7 800	11 150	29 130	388.0	395.6	433.9	440.0	812.7	
October	9 700		8 010	13 780	31 490	470.3	449.9	438.7	444.2	951.7	
November	9 470		8 790	10 510	28 770	329.5	479.9	452.4	449.9	838.2	
December	10 280		15 640	9 750	35 670	290.7	593.1	453.6	455.5	919.5	
2005											
January	10 890		8 910	28 090	47 880	563.5	462.4	476.0	459.6	1 073.8	
February	9 780		8 380	36 950	55 110	322.4	501.6	461.3	461.1	879.1	
March	11 690		8 770	15 230	35 680	342.2	504.7	467.8	460.5	882.6	
April	10 670		6 930	12 310	29 900	370.2	409.5	458.1	458.6	809.6	
May	9 940		5 830	9 660	25 430	329.3	353.9	444.2	455.5	708.7	

.. not applicable

(a) Figures for short-term movement are based on a sample and are subject to sampling error. See paragraphs 10 and 11 of Explanatory Notes for more detail.

(b) See paragraphs 16 to 19 of Explanatory Notes.

(c) See paragraphs 20 to 22 of Explanatory Notes.

(d) Monthly numbers may not add to yearly totals because of rounding. See paragraph 12 of the Explanatory Notes.

TOTAL MOVEMENT, DEPARTURES—Category of Movement

	PERMANENT		LONG-TERM		Total permanent and long-term departures	SHORT-TERM(a)				Total departures(a)
	Australian residents	Australian residents	Overseas visitors	Australian residents (Original)		Australian residents (Seasonally Adjusted)(b)	Australian residents (Trend)(c)	Overseas visitors		
	no.	no.	no.	'000		'000	'000	'000	'000	
Calendar years										
2002	49 080	89 990	83 870	222 940	3 461.0	4 894.7	8 578.7	
2003	54 120	83 990	86 780	224 890	3 388.0	4 789.8	8 402.6	
2004	61 850	87 630	94 190	243 670	4 368.7	5 258.5	9 870.9	
Financial years										
2001–02	48 240	92 070	79 380	219 690	3 367.9	4 837.8	8 425.3	
2002–03	50 460	86 210	82 890	219 570	3 293.3	4 714.6	8 227.5	
2003–04	59 080	84 340	93 280	236 700	3 936.8	5 109.3	9 282.8	
2004(d)										
March	5 180	7 320	7 300	19 800	329.7	346.6	348.0	446.1	795.6	
April	5 200	7 710	6 170	19 080	353.6	365.2	351.9	438.7	811.4	
May	4 650	6 980	5 770	17 400	356.2	348.6	354.8	373.1	746.7	
June	4 200	5 700	9 740	19 640	396.5	362.8	356.9	379.1	795.2	
July	4 940	7 160	8 320	20 420	379.5	362.5	359.3	407.3	807.2	
August	5 720	8 370	6 190	20 280	349.1	355.2	363.4	473.7	843.0	
September	4 200	5 580	6 490	16 270	437.9	368.9	369.2	371.7	825.8	
October	4 590	6 120	5 770	16 480	350.6	374.3	376.0	424.5	791.6	
November	4 600	6 030	9 680	20 310	338.6	384.5	381.9	504.0	862.8	
December	6 070	7 290	14 440	27 800	509.1	406.0	385.6	477.7	1 014.7	
2005										
January	7 720	13 180	8 690	29 580	342.3	380.9	387.0	584.3	956.2	
February	4 880	7 760	7 080	19 730	288.8	376.9	386.8	466.2	774.7	
March	5 330	8 020	7 200	20 550	378.4	386.9	386.3	499.7	898.6	
April	5 460	8 390	5 370	19 220	371.2	385.7	386.1	463.1	853.5	
May	4 790	7 910	5 530	18 230	395.8	388.7	385.6	391.9	806.0	

.. not applicable

(a) Figures for short-term movement are based on a sample and are subject to sampling error. See paragraphs 10 and 11 of Explanatory Notes for more detail.

(b) See paragraphs 16 to 19 of Explanatory Notes.

(c) See paragraphs 20 to 22 of Explanatory Notes.

(d) Monthly numbers may not add to yearly totals because of rounding. See paragraph 12 of Explanatory Notes.

SHORT-TERM MOVEMENT(a), VISITOR ARRIVALS—Country of Residence(b): Trend(c)

Country of residence	2004					2005				
	Aug	Sep	Oct	Nov	Dec	Jan	Feb	Mar	Apr	May
	'000	'000	'000	'000	'000	'000	'000	'000	'000	'000
OCEANIA AND ANTARCTICA—										
Fiji	2.2	2.2	2.2	2.2	2.2	2.3	2.3	2.4	2.4	2.4
New Caledonia	3.2	3.2	3.2	3.2	3.1	3.1	3.1	3.2	3.3	3.4
New Zealand	87.6	87.8	87.9	88.2	89.1	90.6	92.3	94.0	95.5	96.8
Papua New Guinea	2.1	2.1	2.2	2.2	2.2	2.2	2.2	2.3	2.4	2.5
<i>Total(d)</i>	97.9	98.1	98.3	98.6	99.5	101.0	102.8	104.6	106.4	107.8
NORTH-WEST EUROPE—										
Austria	1.6	1.6	1.6	1.6	1.6	1.5	1.5	1.5	1.5	1.4
Denmark	1.6	1.7	1.8	1.9	2.0	2.0	2.0	1.9	1.8	1.7
France	4.8	4.8	4.8	4.9	5.0	5.1	5.1	5.0	5.0	4.9
Germany	11.7	11.9	11.9	12.0	12.0	12.0	12.0	11.9	11.7	11.6
Ireland	4.4	4.4	4.5	4.7	4.8	4.8	4.8	4.8	4.7	4.6
Netherlands	4.0	4.0	4.0	4.0	4.1	4.1	4.2	4.2	4.2	4.2
Norway	1.3	1.3	1.4	1.4	1.5	1.5	1.5	1.5	1.4	1.4
Sweden	2.6	2.7	2.7	2.8	2.9	3.0	3.0	3.0	3.0	3.0
Switzerland	3.3	3.3	3.3	3.4	3.5	3.6	3.6	3.6	3.6	3.6
United Kingdom	56.6	55.9	55.8	56.6	57.9	59.2	60.1	60.3	59.9	59.3
<i>Total(d)</i>	93.9	93.4	93.8	95.3	97.2	98.9	99.7	99.5	98.7	97.6
SOUTHERN AND EASTERN EUROPE—										
Italy	3.9	4.0	4.1	4.2	4.3	4.3	4.2	4.1	4.0	3.9
Spain	1.3	1.3	1.3	1.3	1.3	1.3	1.4	1.4	1.4	1.4
<i>Total(d)</i>	9.2	9.4	9.7	10.0	10.3	10.4	10.3	10.2	9.9	9.7
NORTH AFRICA AND THE MIDDLE EAST—										
Israel	1.1	1.2	1.2	1.3	1.4	1.4	1.4	1.3	1.3	1.2
United Arab Emirates	1.7	1.6	1.6	1.5	1.5	1.5	1.5	1.5	1.5	1.6
<i>Total(d)</i>	5.4	5.3	5.3	5.4	5.5	5.6	5.7	5.7	5.6	5.6
SOUTH-EAST ASIA—										
Indonesia	7.1	6.7	6.3	6.2	6.3	6.6	6.8	7.0	7.1	7.2
Malaysia	15.1	15.3	15.3	15.1	14.9	14.6	14.4	14.2	14.1	14.0
Philippines	2.6	2.6	2.6	2.6	2.7	2.7	2.8	2.8	2.9	2.9
Singapore	20.4	21.0	21.6	22.2	22.7	22.9	23.1	23.1	23.2	23.2
Thailand	6.4	6.4	6.5	6.5	6.5	6.5	6.5	6.4	6.4	6.3
<i>Total(d)</i>	53.5	54.0	54.4	54.9	55.3	55.7	55.9	55.9	55.9	55.7
NORTH-EAST ASIA—										
China (excludes SARs and Taiwan Province)	21.0	22.0	23.0	23.7	23.9	23.5	22.8	21.8	20.9	20.1
Hong Kong (SAR of China)	11.3	11.7	12.1	12.4	12.6	12.7	12.8	12.8	13.0	13.1
Japan	59.7	61.3	62.6	63.4	63.0	61.4	59.2	56.7	54.2	51.7
Korea	18.0	18.1	18.3	18.7	19.2	19.8	20.5	21.2	21.7	22.2
Taiwan (Province of China)	8.2	8.2	8.3	8.5	8.9	9.2	9.3	9.4	9.4	9.3
<i>Total(d)</i>	118.4	121.5	124.4	126.8	127.7	126.8	124.7	122.2	119.5	116.6
SOUTHERN AND CENTRAL ASIA—										
India	4.5	4.6	4.8	5.0	5.1	5.1	5.2	5.1	5.1	5.0
<i>Total(d)</i>	6.0	6.2	6.4	6.6	6.7	6.8	6.8	6.8	6.8	6.7
AMERICAS—										
Canada	8.5	8.3	8.2	8.3	8.4	8.7	8.9	9.0	9.1	9.1
United States of America	36.6	36.1	35.8	35.9	36.4	37.1	37.7	37.9	38.0	37.9
<i>Total(d)</i>	47.4	46.9	46.6	46.8	47.6	48.6	49.4	49.8	50.0	50.0
SUB-SAHARAN AFRICA—										
South Africa	4.1	4.0	4.0	4.0	4.1	4.2	4.3	4.3	4.3	4.3
<i>Total(d)</i>	5.3	5.3	5.3	5.4	5.6	5.7	5.8	5.8	5.8	5.8
Total(d)(e)	437.1	440.0	444.2	449.9	455.5	459.6	461.1	460.5	458.6	455.5

(a) Figures for short-term movement are based on a sample and are subject to sampling error. See paragraphs 10 and 11 of Explanatory Notes for more detail.

(b) See paragraphs 7 and 8 of Explanatory Notes.

(c) See paragraphs 20 to 22 of Explanatory Notes.

(d) Includes other.

(e) Includes not stated/inadequately described.

SHORT-TERM MOVEMENT(a), VISITOR ARRIVALS—Country of Residence(b): **Seasonally Adjusted**(c)(d)

	2004					2005				
	Aug	Sep	Oct	Nov	Dec	Jan	Feb	Mar	Apr	May
	'000	'000	'000	'000	'000	'000	'000	'000	'000	'000
OCEANIA AND ANTARCTICA—										
Fiji	2.0	2.3	1.9	2.1	2.4	2.2	2.4	2.3	2.4	2.4
New Caledonia	3.1	3.4	3.3	3.1	3.1	2.9	3.3	2.9	3.4	3.5
New Zealand	89.7	86.1	86.5	88.0	89.9	90.3	92.2	91.9	98.6	96.7
Papua New Guinea	2.1	2.0	2.1	2.3	2.3	2.2	2.0	2.2	2.3	2.9
<i>Total(e)</i>	99.7	96.6	96.7	98.5	100.7	100.5	102.7	102.4	109.3	108.3
NORTH-WEST EUROPE—										
Austria	1.6	1.7	1.6	1.6	1.5	1.6	1.5	1.4	1.5	1.4
Denmark	1.5	1.7	1.8	1.8	1.9	2.0	2.1	2.3	1.4	1.6
France	4.6	4.8	4.9	4.7	5.2	5.0	5.4	4.9	5.0	4.8
Germany	12.3	11.5	12.0	11.6	12.3	11.8	12.0	12.4	11.3	11.4
Netherlands	4.1	3.9	3.8	4.1	4.2	4.2	4.0	4.2	4.4	4.0
Norway	1.4	1.2	1.3	1.6	1.5	1.5	1.3	1.9	1.1	1.4
Sweden	2.6	2.6	2.8	2.9	2.9	3.0	3.1	3.1	2.5	3.2
Switzerland	3.1	3.4	3.4	3.4	3.5	3.6	3.6	3.6	3.6	3.5
United Kingdom	58.2	54.5	55.6	53.5	58.0	61.2	59.7	65.1	57.7	55.8
<i>Total(e)</i>	95.1	91.6	93.3	91.7	98.6	100.7	99.1	106.9	94.0	93.5
SOUTHERN AND EASTERN EUROPE—										
Italy	3.7	4.1	4.2	4.2	4.1	4.9	3.9	4.1	4.1	3.6
<i>Total(e)</i>	9.1	8.9	9.6	9.7	10.7	11.6	9.4	10.0	10.6	8.9
NORTH AFRICA AND THE MIDDLE EAST—										
Israel	1.5	1.1	1.2	1.3	1.5	1.5	1.4	1.3	1.2	1.2
<i>Total(e)</i>	5.8	5.3	5.0	5.5	5.4	6.0	5.8	5.8	6.8	5.6
SOUTH-EAST ASIA—										
Indonesia	7.3	6.7	5.7	8.4	6.1	6.3	7.2	7.4	7.1	6.8
Malaysia	15.8	8.2	14.9	16.0	14.6	14.9	13.8	14.5	13.6	14.6
Philippines	2.6	2.7	2.4	2.7	2.6	2.7	2.8	2.8	2.8	2.9
Singapore	19.6	19.9	22.3	23.3	21.7	24.0	22.6	22.3	24.6	22.6
Thailand	6.5	8.9	6.3	6.6	6.4	6.6	6.3	6.8	6.2	6.1
<i>Total(e)</i>	53.8	48.0	53.5	59.2	54.4	56.5	55.2	56.2	56.1	55.3
NORTH-EAST ASIA—										
Hong Kong (SAR of China)	11.0	12.0	12.2	11.9	13.0	13.1	12.7	11.9	13.4	13.3
Japan	57.1	67.1	62.6	64.6	57.8	64.4	61.5	57.7	52.3	48.3
Korea	17.2	18.6	18.9	19.0	17.2	20.6	20.6	21.7	22.0	21.8
Taiwan (Province of China)	7.6	6.8	7.8	11.5	8.7	6.8	9.5	10.4	10.6	8.0
<i>Total(e)</i>	112.3	126.1	125.5	131.2	121.1	138.5	127.7	123.1	119.2	111.0
SOUTHERN AND CENTRAL ASIA—										
India	4.6	4.8	4.9	4.6	5.2	5.3	5.4	5.2	4.7	5.0
<i>Total(e)</i>	6.2	6.4	6.5	6.2	6.7	6.9	7.1	6.8	6.4	6.7
AMERICAS—										
Canada	8.9	7.9	7.1	8.7	8.9	9.0	8.2	9.0	9.5	9.0
United States of America	39.7	35.1	34.3	33.9	37.8	38.0	37.6	38.6	37.6	37.0
<i>Total(e)</i>	51.3	45.5	43.8	45.1	49.8	49.7	48.7	50.3	50.2	48.9
SUB-SAHARAN AFRICA—										
South Africa	3.8	4.3	3.5	3.9	4.7	4.0	4.1	4.8	3.8	4.5
<i>Total(e)</i>	5.0	5.5	4.8	5.4	6.3	5.4	5.6	6.2	5.4	5.9
Total(e)(f)	438.2	433.9	438.7	452.4	453.6	476.0	461.3	467.8	458.1	444.2

(a) Figures for short-term movement are based on a sample and are subject to sampling error. See paragraphs 10 and 11 of Explanatory Notes for more detail.

(b) See paragraphs 7 and 8 of Explanatory Notes.

(c) See paragraphs 16 to 19 of Explanatory Notes.

(d) Seasonally adjusted data for Ireland, Spain, United Arab Emirates and China are of an unpublishable standard and have not been included separately in this table, but are included in totals where applicable.

(e) Includes other.

(f) Includes not stated/inadequately described.

SHORT-TERM MOVEMENT(a), VISITOR ARRIVALS—Country of Residence(b): Original

	CALENDAR YEAR		FINANCIAL YEAR		2004	2005				
	2003	2004	2002-03	2003-04	Dec	Jan	Feb	Mar	Apr	May
<i>Country of residence</i>	'000	'000	'000	'000	'000	'000	'000	'000	'000	'000
OCEANIA AND ANTARCTICA—										
Fiji	25.5	25.8	23.7	25.6	4.1	2.3	2.4	2.3	2.1	2.1
New Caledonia	33.6	36.1	32.6	34.4	3.5	6.4	4.3	2.8	2.2	3.2
New Zealand	839.1	1 032.7	793.1	926.1	97.7	63.8	64.2	91.5	97.9	82.6
Papua New Guinea	27.3	25.8	26.7	27.1	3.2	2.2	1.5	2.1	2.0	2.4
<i>Total(c)</i>	956.5	1 155.0	904.7	1 047.0	112.6	77.6	74.5	101.7	107.0	92.6
NORTH-WEST EUROPE—										
Austria	18.8	18.4	18.9	18.4	2.2	1.9	1.9	1.2	1.0	0.8
Denmark	19.0	20.5	18.6	20.1	2.6	2.5	3.2	2.4	0.9	0.7
France	51.4	58.1	46.3	57.3	6.5	5.2	5.8	4.4	4.4	3.0
Germany	137.9	140.6	134.0	141.0	15.4	12.3	15.5	14.7	9.0	6.5
Ireland	53.0	53.7	47.2	54.3	8.9	4.8	4.6	6.0	3.2	2.6
Netherlands	51.0	48.2	52.1	49.4	5.9	4.7	5.1	4.4	2.8	2.1
Norway	17.2	16.8	17.5	16.9	2.3	1.8	2.4	2.0	0.8	0.5
Sweden	31.8	33.4	31.8	32.8	6.1	3.9	4.6	3.3	1.7	1.2
Switzerland	40.9	41.2	41.2	41.5	6.0	5.1	4.0	3.7	2.6	1.6
United Kingdom	672.8	676.2	644.2	686.4	109.2	70.8	77.6	86.8	46.2	29.0
<i>Total(c)</i>	1 113.0	1 129.6	1 070.9	1 138.8	168.2	115.3	126.7	131.2	74.1	49.0
SOUTHERN AND EASTERN EUROPE—										
Italy	41.3	47.1	42.5	43.7	7.0	4.7	3.6	3.3	2.4	2.1
Spain	12.5	15.8	12.1	14.4	1.3	1.5	1.1	1.3	1.0	0.7
<i>Total(c)</i>	97.9	113.3	98.1	106.5	17.3	12.6	9.7	8.5	6.8	5.2
NORTH AFRICA AND THE MIDDLE EAST—										
Israel	13.3	14.4	13.2	13.7	1.8	1.5	1.6	1.7	1.4	0.8
United Arab Emirates	15.2	19.8	14.9	15.9	1.5	1.2	1.3	1.3	1.3	0.9
<i>Total(c)</i>	52.6	64.0	50.1	56.4	6.1	5.4	5.6	5.5	4.5	3.0
SOUTH-EAST ASIA—										
Indonesia	90.3	84.4	86.9	91.5	9.9	5.7	8.1	6.9	5.7	5.0
Malaysia	155.6	166.8	142.4	175.3	18.8	8.3	18.3	14.0	11.7	19.0
Philippines	27.0	31.2	25.4	30.4	2.9	1.9	2.4	3.7	3.5	3.4
Singapore	253.4	251.2	261.6	252.6	36.0	12.4	24.5	22.4	18.4	22.3
Thailand	73.2	79.8	75.5	78.8	6.1	4.8	5.5	8.2	12.0	6.0
<i>Total(c)</i>	625.3	638.7	617.7	654.1	77.4	35.0	61.9	57.5	53.0	57.5
NORTH-EAST ASIA—										
China (excludes SARs and Taiwan Province)	176.1	251.3	177.1	216.9	25.1	37.9	38.8	17.4	18.9	15.9
Hong Kong (SAR of China)	129.3	137.2	140.7	132.2	16.4	9.7	19.3	14.6	11.5	9.2
Japan	627.7	710.4	658.6	687.5	62.5	63.7	62.2	67.6	50.2	43.1
Korea	207.3	211.9	195.8	215.8	19.4	33.3	21.3	19.9	19.6	18.1
Taiwan (Province of China)	87.7	98.8	80.8	103.9	7.7	8.4	11.4	9.2	9.9	8.3
<i>Total(c)</i>	1 230.0	1 411.8	1 254.8	1 358.5	131.3	153.3	153.5	128.8	110.3	95.0
SOUTHERN AND CENTRAL ASIA—										
India	45.6	55.6	41.2	53.8	5.8	4.6	5.3	5.2	4.8	8.0
<i>Total(c)</i>	62.2	73.8	55.9	71.3	8.1	6.0	7.3	6.9	6.7	9.3
AMERICAS—										
Canada	87.9	98.2	86.5	92.9	12.9	12.6	11.2	11.0	7.1	5.9
United States of America	422.1	433.3	423.5	430.1	44.1	36.6	42.5	43.6	31.7	30.3
<i>Total(c)</i>	537.5	561.5	537.1	551.9	61.6	52.7	56.8	57.4	41.6	38.3
SUB-SAHARAN AFRICA—										
South Africa	52.7	50.4	47.5	55.1	7.6	2.9	3.8	5.7	4.1	3.1
<i>Total(c)</i>	69.2	67.2	62.8	72.4	10.4	4.4	5.6	7.1	5.7	4.0
Total(c)(d)	4 745.9	5 215.0	4 655.8	5 057.2	593.1	462.4	501.6	504.7	409.5	353.9

(a) Figures for short-term movement are based on a sample and are subject to sampling error. See paragraphs 10 and 11 of Explanatory Notes for more detail.

(b) See paragraphs 7 and 8 of Explanatory Notes.

(c) Includes other.

(d) Includes not stated/inadequately described.

SHORT-TERM MOVEMENT(a), VISITOR ARRIVALS—Intended Length of Stay and Main Reason for Journey: **Original**

	CALENDAR YEAR		FINANCIAL YEAR		2004	2005				
	2003	2004	2002-03	2003-04	Dec	Jan	Feb	Mar	Apr	May
	'000	'000	'000	'000	'000	'000	'000	'000	'000	'000
Intended length of stay										
Under 1 week	1 320.0	1 552.0	1 281.6	1 474.3	136.6	135.8	149.4	161.6	135.9	132.8
1 and under 2 weeks	1 347.9	1 506.1	1 348.2	1 423.1	158.6	122.5	142.2	148.1	132.8	110.1
2 weeks and under 1 month	1 008.4	1 068.3	986.3	1 036.3	171.0	86.8	88.6	108.0	75.1	59.2
1 and under 2 months	416.0	427.4	407.7	421.3	73.9	42.5	40.7	38.4	25.0	19.2
2 and under 3 months	148.6	153.1	146.6	154.8	18.5	15.6	13.0	12.8	10.7	8.9
3 and under 6 months	229.9	229.1	222.5	246.9	19.1	22.5	22.6	16.1	14.3	11.0
6 and under 12 months	275.1	279.0	262.9	300.6	15.5	36.6	45.0	19.7	15.7	12.7
Total(b)	4 745.9	5 215.0	4 655.8	5 057.2	593.1	462.4	501.6	504.7	409.5	353.9
Main reason for journey										
Convention/conference	142.5	150.8	126.0	148.3	7.2	13.0	10.7	14.4	12.4	13.9
Business	447.5	494.8	429.7	487.5	31.0	34.9	47.7	47.7	46.3	50.3
Visiting friends/relatives	932.2	1 036.2	864.8	985.8	165.9	85.3	90.2	112.4	85.9	67.3
Holiday	2 440.6	2 685.1	2 361.2	2 603.0	322.9	229.2	274.7	281.0	221.1	185.1
Employment	83.9	100.1	67.6	109.4	7.4	9.0	6.3	8.0	5.8	5.8
Education	225.6	253.5	222.8	249.8	8.8	34.3	51.4	16.9	14.6	10.0
Other & not stated(c)	473.5	494.6	583.7	473.4	49.9	56.8	20.5	24.2	23.4	21.5
Total	4 745.9	5 215.0	4 655.8	5 057.2	593.1	462.4	501.6	504.7	409.5	353.9

(a) Figures for short-term movement are based on a sample and are subject to sampling error. See paragraphs 10 and 11 of Explanatory Notes for more detail.

(b) Includes not stated.

(c) Includes 'Exhibition' from July 1998.

Note: Components may not sum to totals due to rounding. See paragraph 12 of Explanatory Notes.

SHORT-TERM MOVEMENT(a), RESIDENT DEPARTURES—Main Destination(b): Trend(c)

	2004					2005				
	Aug	Sep	Oct	Nov	Dec	Jan	Feb	Mar	Apr	May
<i>Main destination</i>	'000	'000	'000	'000	'000	'000	'000	'000	'000	'000
OCEANIA AND ANTARCTICA—										
Fiji	14.5	15.1	15.7	16.1	16.4	16.5	16.5	16.5	16.5	16.4
New Caledonia	1.2	1.2	1.3	1.3	1.4	1.4	1.4	1.4	1.4	1.4
New Zealand	68.8	69.4	69.9	70.2	70.3	70.5	70.3	69.9	69.5	69.1
Norfolk Island	2.3	2.2	2.1	1.9	1.9	1.8	1.8	1.8	1.8	1.8
Papua New Guinea	3.1	3.2	3.2	3.2	3.2	3.2	3.3	3.4	3.6	3.7
Vanuatu	2.8	3.1	3.3	3.3	3.3	3.2	3.1	3.0	2.9	2.9
<i>Total(d)</i>	96.7	98.4	99.8	100.6	100.8	100.7	100.1	99.5	99.0	98.6
NORTH-WEST EUROPE—										
France	5.3	5.3	5.4	5.4	5.5	5.5	5.5	5.6	5.7	5.8
Germany	4.0	4.0	4.1	4.0	4.0	4.1	4.2	4.3	4.4	4.6
Ireland	2.4	2.4	2.3	2.3	2.3	2.4	2.4	2.5	2.6	2.6
Netherlands	1.5	1.5	1.5	1.5	1.5	1.5	1.5	1.4	1.4	1.4
United Kingdom	31.0	31.0	31.0	31.1	31.2	31.3	31.5	31.8	32.1	32.4
<i>Total(d)</i>	49.0	48.9	49.0	49.0	49.1	49.3	49.8	50.4	51.2	52.0
SOUTHERN AND EASTERN EUROPE—										
Greece	3.4	3.5	3.5	3.4	3.4	3.4	3.5	3.7	4.0	4.2
Italy	7.6	7.8	7.8	7.7	7.4	7.1	7.0	6.9	7.0	7.2
Spain	1.6	1.6	1.6	1.5	1.5	1.5	1.5	1.5	1.6	1.7
<i>Total(d)</i>	20.0	20.0	19.9	19.5	18.9	18.5	18.4	18.6	19.1	19.6
NORTH AFRICA AND THE MIDDLE EAST—										
Lebanon	2.4	2.3	2.3	2.3	2.2	2.1	2.0	2.0	1.9	1.9
Turkey	1.3	1.1	1.1	1.2	1.3	1.4	1.5	1.5	1.6	1.6
<i>Total(d)</i>	9.5	9.5	9.9	10.1	10.2	10.1	9.9	9.8	9.7	9.7
SOUTH-EAST ASIA—										
Indonesia	25.9	26.1	27.1	28.7	30.2	31.2	31.4	31.2	30.8	30.4
Malaysia	11.5	12.0	12.7	13.3	13.9	14.2	14.3	14.3	14.3	14.1
Philippines	6.4	6.3	6.3	6.4	6.5	6.5	6.5	6.5	6.4	6.2
Singapore	13.2	13.8	14.5	15.2	15.6	15.6	15.4	15.0	14.7	14.2
Thailand	15.3	15.8	16.4	16.7	16.7	16.3	15.8	15.3	14.8	14.5
Viet Nam	9.6	9.7	9.7	9.6	9.6	9.6	9.7	9.8	9.8	9.8
<i>Total(d)</i>	84.2	86.4	89.8	93.5	96.3	97.2	96.6	95.2	93.6	91.6
NORTH-EAST ASIA—										
China (excludes SARs and Taiwan Province)	16.0	16.3	16.7	17.1	17.6	18.1	18.6	19.1	19.4	19.7
Hong Kong (SAR of China)	12.5	13.1	13.7	14.2	14.5	14.7	14.8	14.8	14.9	15.0
Japan	8.1	8.3	8.3	8.3	8.3	8.4	8.4	8.3	8.1	7.9
Korea	2.2	2.3	2.3	2.4	2.4	2.3	2.3	2.4	2.4	2.4
Taiwan (Province of China)	3.6	3.5	3.4	3.2	3.1	3.1	3.2	3.2	3.2	3.3
<i>Total(d)</i>	42.7	43.7	44.6	45.4	46.1	46.8	47.5	47.9	48.3	48.5
SOUTHERN AND CENTRAL ASIA—										
India	6.9	7.1	7.2	7.2	7.1	7.0	7.0	7.1	7.3	7.4
Sri Lanka	2.2	2.2	2.1	2.0	2.0	1.9	1.9	2.1	2.2	2.5
<i>Total(d)</i>	11.4	11.6	11.6	11.4	11.1	10.9	10.9	11.1	11.4	11.8
AMERICAS—										
Canada	6.7	6.8	6.8	6.8	6.8	6.8	6.9	7.0	7.2	7.3
United States of America	31.6	31.4	31.6	32.1	32.7	33.3	33.7	33.9	34.0	33.9
<i>Total(d)</i>	41.9	42.2	43.0	44.0	44.8	45.2	45.3	45.3	45.2	44.9
SUB-SAHARAN AFRICA—										
South Africa	3.8	4.0	4.1	4.2	4.2	4.2	4.1	4.0	3.9	3.8
<i>Total(d)</i>	6.2	6.5	6.7	6.8	6.8	6.7	6.5	6.4	6.3	6.3
Total(d)(e)	363.4	369.2	376.0	381.9	385.6	387.0	386.8	386.3	386.1	385.6

(a) Figures for short-term movement are based on a sample and are subject to sampling error. See paragraphs 10 and 11 of Explanatory Notes for more detail.

(b) See paragraphs 7 to 9 of Explanatory Notes.

(c) See paragraphs 20 to 22 of Explanatory Notes.

(d) Includes other.

(e) Includes not stated/inadequately described.

SHORT-TERM MOVEMENT(a), RESIDENT DEPARTURES—Main Destination(b): **Seasonally Adjusted**(c)(d)

	2004					2005				
	Aug	Sep	Oct	Nov	Dec	Jan	Feb	Mar	Apr	May
<i>Main destination</i>	'000	'000	'000	'000	'000	'000	'000	'000	'000	'000
OCEANIA AND ANTARCTICA—										
Fiji	14.6	15.1	15.0	17.5	16.5	16.2	16.3	15.9	17.3	16.3
New Caledonia	1.3	1.4	0.8	1.3	1.7	1.6	1.4	1.1	1.6	1.3
New Zealand	67.8	69.1	70.1	65.9	73.7	72.1	69.4	70.8	66.7	70.0
Papua New Guinea	2.8	3.6	3.2	3.2	3.0	3.1	3.5	3.2	3.9	3.7
<i>Total(e)</i>	95.1	98.9	98.8	97.7	105.9	101.5	98.3	98.6	98.2	99.7
NORTH-WEST EUROPE—										
France	4.9	5.6	5.1	5.5	5.7	6.2	5.0	4.9	5.8	6.5
Germany	3.9	4.4	3.9	4.1	4.1	3.9	4.5	3.4	5.1	4.7
Ireland	2.4	2.5	2.4	2.3	2.3	1.8	3.0	2.6	2.3	2.7
Netherlands	1.6	1.4	1.5	1.6	1.6	1.6	1.4	1.2	1.7	1.3
United Kingdom	30.8	30.3	31.3	32.4	32.2	28.0	32.6	32.1	31.8	33.2
<i>Total(e)</i>	48.6	48.6	49.4	49.5	51.2	46.0	50.7	48.6	52.9	53.2
SOUTHERN AND EASTERN EUROPE—										
Greece	3.6	3.7	3.2	3.7	4.0	2.8	3.2	3.6	4.2	4.7
Italy	7.3	8.3	7.5	7.4	8.7	7.5	5.3	6.4	7.3	8.2
Spain	1.2	1.9	1.8	1.6	1.5	1.0	1.6	1.7	1.4	2.0
<i>Total(e)</i>	18.6	22.3	19.0	19.0	20.5	18.9	16.4	17.6	19.2	22.1
NORTH AFRICA AND THE MIDDLE EAST—										
Lebanon	2.9	2.3	2.2	2.2	2.3	2.6	1.9	1.5	1.8	2.3
Turkey	0.8	1.4	0.6	1.2	1.6	1.8	1.2	1.3	1.7	1.7
<i>Total(e)</i>	9.0	10.1	9.7	10.8	11.1	11.2	8.9	8.5	9.7	10.9
SOUTH-EAST ASIA—										
Indonesia	24.9	23.0	27.1	29.7	32.0	30.9	32.8	30.0	31.3	29.2
Malaysia	9.7	12.2	11.2	16.5	13.4	12.4	16.2	13.1	15.6	13.4
Philippines	6.5	6.7	5.9	6.0	8.9	7.0	6.8	6.3	6.0	6.2
Singapore	12.5	13.6	13.9	15.2	17.5	15.1	15.3	15.2	14.1	14.1
Thailand	14.5	15.8	16.8	16.8	19.0	14.1	12.4	16.1	14.8	14.2
Viet Nam	10.1	9.6	10.1	9.3	9.9	8.3	9.7	11.6	9.7	8.9
<i>Total(e)</i>	80.0	83.7	86.9	97.7	106.1	91.9	95.8	95.1	94.4	88.1
NORTH-EAST ASIA—										
China (excludes SARs and Taiwan Province)	16.3	15.8	16.7	17.6	16.5	18.8	18.1	19.9	19.4	19.3
Hong Kong (SAR of China)	11.2	12.0	14.4	15.1	14.5	14.5	14.7	14.5	15.0	15.3
Japan	10.3	7.3	8.2	7.6	8.6	8.4	8.8	8.6	7.5	7.6
<i>Total(e)</i>	44.6	41.4	44.7	46.3	45.9	46.4	47.3	49.3	47.7	48.2
SOUTHERN AND CENTRAL ASIA—										
India	6.7	7.8	8.2	6.3	6.4	8.0	6.4	7.2	7.4	7.5
Sri Lanka	1.9	1.9	2.4	2.4	2.0	1.7	1.6	1.9	2.1	3.3
<i>Total(e)</i>	10.5	12.5	13.2	10.5	10.4	11.7	9.9	11.4	11.4	12.5
AMERICAS—										
Canada	6.4	6.9	6.9	6.9	7.0	6.7	7.1	6.6	6.9	8.2
United States of America	31.2	31.3	30.7	32.5	33.3	33.4	31.8	37.2	32.7	33.1
<i>Total(e)</i>	40.7	42.9	41.9	45.1	45.8	45.1	42.9	49.0	43.2	44.7
SUB-SAHARAN AFRICA—										
South Africa	3.5	4.0	6.0	4.2	4.4	4.6	3.6	3.9	4.0	3.8
<i>Total(e)</i>	5.7	6.7	8.6	6.6	7.6	7.0	5.3	6.6	6.5	6.4
Total(e)(f)	355.2	368.9	374.3	384.5	406.0	380.9	376.9	386.9	385.7	388.7

(a) Figures for short-term movement are based on a sample and are subject to sampling error. See paragraphs 10 and 11 of Explanatory Notes for more detail.

(b) See paragraph 7 to 9 of Explanatory Notes.

(c) See paragraphs 16 to 19 of Explanatory Notes.

(d) Seasonally adjusted data for Norfolk Island, Vanuatu, Korea and Taiwan are of an unublishable standard and have not been included separately in this table, but are included in totals where applicable.

(e) Includes other.

(f) Includes not stated/inadequately described.

SHORT-TERM MOVEMENT(a), RESIDENT DEPARTURES—Main Destination(b): **Original**

	CALENDAR YEAR		FINANCIAL YEAR		2004	2005				
	2003	2004	2002-03	2003-04	Dec	Jan	Feb	Mar	Apr	May
<i>Main destination</i>	'000	'000	'000	'000	'000	'000	'000	'000	'000	'000
OCEANIA AND ANTARCTICA—										
Fiji	145.2	175.4	129.2	161.4	18.8	15.0	11.0	15.3	15.6	14.1
New Caledonia	15.3	15.5	15.8	15.7	1.7	1.0	0.6	1.0	1.6	1.3
New Zealand	662.8	815.8	615.3	739.2	116.6	71.3	69.4	82.9	69.6	51.6
Norfolk Island	33.4	25.5	30.6	30.0	2.0	1.5	1.9	2.0	2.3	1.3
Papua New Guinea	34.6	36.2	34.2	34.9	2.9	2.9	2.9	3.3	4.0	3.3
Vanuatu	27.2	34.6	27.2	30.0	4.1	3.2	1.8	2.9	2.9	2.7
<i>Total(c)</i>	959.7	1 151.1	888.2	1 057.0	153.3	98.7	90.3	110.3	99.2	78.2
NORTH-WEST EUROPE—										
France	50.4	63.8	51.2	58.0	6.0	3.8	2.0	3.7	5.6	9.9
Germany	39.6	48.2	42.1	44.9	4.0	2.5	2.6	2.9	4.7	6.9
Ireland	25.8	27.9	24.3	27.2	2.8	0.9	1.3	1.8	2.0	3.8
Netherlands	17.2	18.7	17.6	17.7	1.5	0.9	0.7	1.0	1.8	1.7
United Kingdom	312.9	375.1	308.9	351.4	33.6	18.1	17.5	26.8	30.6	49.2
<i>Total(c)</i>	492.6	590.8	492.1	550.9	54.2	30.0	26.6	39.2	48.8	78.5
SOUTHERN AND EASTERN EUROPE—										
Greece	33.3	41.0	33.6	37.5	1.8	0.7	0.9	1.7	4.1	8.8
Italy	70.9	91.4	71.0	84.2	6.8	2.8	1.8	4.6	8.1	13.0
Spain	18.7	20.6	18.8	19.6	1.2	0.5	0.9	1.4	1.1	3.2
<i>Total(c)</i>	192.4	239.0	188.0	222.6	14.7	6.6	5.8	11.3	18.9	39.5
NORTH AFRICA AND THE MIDDLE EAST—										
Lebanon	23.7	33.0	20.3	33.1	2.3	1.3	0.6	1.5	1.4	2.5
Turkey	13.1	16.4	12.7	18.0	0.7	0.6	0.6	1.0	2.9	3.8
<i>Total(c)</i>	87.6	124.0	76.2	118.5	11.9	10.1	6.3	8.6	10.5	12.4
SOUTH-EAST ASIA—										
Indonesia	186.4	335.1	194.4	271.1	28.2	25.8	20.8	27.1	26.7	26.1
Malaysia	100.9	144.4	97.8	126.0	17.6	12.7	12.6	14.6	12.6	10.4
Philippines	59.6	78.6	55.7	71.2	15.3	7.8	5.7	7.4	6.4	6.2
Singapore	124.3	159.0	119.1	148.4	18.5	15.7	12.9	15.1	14.6	12.9
Thailand	128.2	188.2	150.5	153.8	19.7	12.4	10.4	15.2	13.4	11.0
Viet Nam	76.4	105.0	74.1	92.1	18.7	13.3	8.7	11.9	7.5	6.8
<i>Total(c)</i>	704.9	1 044.8	721.9	894.4	123.5	91.8	73.7	94.1	84.2	75.5
NORTH-EAST ASIA—										
China (excludes SARs and Taiwan Province)	114.2	182.0	117.9	150.2	20.6	17.6	12.7	21.4	22.2	17.0
Hong Kong (SAR of China)	115.0	152.6	114.8	140.1	21.9	14.1	13.7	16.3	14.9	13.1
Japan	75.6	89.0	72.5	79.6	8.9	7.6	7.0	8.6	8.9	7.3
Korea	25.1	27.5	24.7	27.0	2.7	2.1	1.6	2.3	2.7	2.6
Taiwan (Province of China)	34.0	40.5	33.2	39.4	5.7	2.2	3.1	3.7	2.7	2.8
<i>Total(c)</i>	366.0	494.4	364.8	438.9	60.1	43.7	38.4	52.5	51.6	43.2
SOUTHERN AND CENTRAL ASIA—										
India	55.0	73.4	46.7	60.6	13.4	6.3	8.7	6.5	5.4	4.0
Sri Lanka	21.3	24.4	19.1	23.0	4.3	1.2	1.4	2.0	1.5	1.7
<i>Total(c)</i>	98.4	125.2	84.4	110.4	20.2	8.9	12.3	10.8	8.7	6.9
AMERICAS—										
Canada	66.6	79.2	70.2	72.1	10.8	7.9	5.3	4.4	4.7	11.9
United States of America	296.3	376.1	287.4	342.1	41.5	32.0	21.4	33.5	32.4	36.4
<i>Total(c)</i>	404.9	502.4	397.9	456.7	59.4	44.8	30.1	43.3	40.5	51.8
SUB-SAHARAN AFRICA—										
South Africa	44.5	46.4	43.3	42.9	6.9	4.2	3.2	4.2	3.8	2.7
<i>Total(c)</i>	68.1	75.8	63.5	71.3	10.5	7.0	4.6	6.5	6.2	5.1
Total(c)(d)	3 388.0	4 368.7	3 293.3	3 936.8	509.1	342.3	288.8	378.4	371.2	395.8

(a) Figures for short-term movement are based on a sample and are subject to sampling error. See paragraphs 10 and 11 of Explanatory Notes for more detail.

(b) See paragraphs 7 to 9 of Explanatory Notes.

(c) Includes other.

(d) Includes not stated/inadequately described.

	CALENDAR YEAR		FINANCIAL YEAR		2004	2005				
	2003	2004	2002-03	2003-04	Dec	Jan	Feb	Mar	Apr	May
	'000	'000	'000	'000	'000	'000	'000	'000	'000	'000
Intended length of stay										
Under 1 week	414.4	557.3	376.5	497.7	40.3	38.8	48.3	62.1	57.5	54.2
1 and under 2 weeks	930.9	1 273.8	940.7	1 120.3	110.1	106.3	91.6	120.9	116.7	97.0
2 weeks and under 1 month	952.9	1 210.7	899.0	1 100.9	165.3	106.3	77.3	101.5	102.2	98.8
1 and under 2 months	555.1	709.0	553.5	627.3	135.9	41.9	34.6	49.3	47.1	72.8
2 and under 3 months	188.0	225.5	181.1	212.1	30.6	11.6	9.5	12.8	14.7	26.4
3 and under 6 months	173.1	206.7	174.9	195.0	14.5	15.2	12.0	15.0	16.4	29.3
6 and under 12 months	173.6	185.7	167.8	183.5	12.4	22.3	15.5	16.7	16.6	17.3
Total(b)	3 388.0	4 368.7	3 293.3	3 936.8	509.1	342.3	288.8	378.4	371.2	395.8
Main reason for journey										
Convention/conference	137.7	171.4	123.1	164.2	6.9	13.4	12.3	16.4	18.6	19.2
Business	554.4	649.4	531.9	615.3	36.8	50.8	54.8	56.6	66.2	64.5
Visiting friends/relatives	905.5	1 107.1	860.6	1 028.4	179.8	81.9	72.5	100.6	84.7	102.8
Holiday	1 421.7	2 032.4	1 385.1	1 743.9	245.2	154.4	122.1	172.8	167.4	176.8
Employment	99.6	101.4	99.3	102.1	8.1	13.9	9.3	8.2	8.3	9.6
Education	45.8	54.3	42.8	51.6	4.3	5.1	2.5	2.8	4.6	2.3
Other & not stated(c)	223.4	252.7	250.5	231.4	28.2	22.8	15.3	21.0	21.4	20.5
Total	3 388.0	4 368.7	3 293.3	3 936.8	509.1	342.3	288.8	378.4	371.2	395.8

(a) Figures for short-term movement are based on a sample and are subject to sampling error. See paragraphs 10 and 11 of Explanatory Notes for more detail.

(b) Includes not stated.

(c) Includes 'Exhibition' from July 1998.

Note: Components may not sum to totals due to rounding. See paragraph 12 of Explanatory Notes.

State where spent most time	CALENDAR YEAR		FINANCIAL YEAR		2004	2005				
	2003	2004	2002-03	2003-04	Dec	Jan	Feb	Mar	Apr	May
	'000	'000	'000	'000	'000	'000	'000	'000	'000	'000
New South Wales	1 947.8	2 026.4	1 946.5	1 992.8	187.4	250.4	201.0	200.8	185.7	155.1
Victoria	803.9	974.6	730.8	975.5	93.0	106.7	83.2	95.3	83.2	63.8
Queensland	1 331.1	1 515.8	1 336.0	1 405.9	123.2	142.9	115.0	128.0	123.6	115.9
South Australia	115.5	136.5	109.9	131.2	14.6	15.8	11.3	14.8	13.9	9.5
Western Australia	450.0	459.2	450.5	455.5	46.6	55.4	43.1	49.1	46.0	36.4
Tasmania	41.1	44.0	38.5	47.7	5.0	5.6	5.4	4.8	3.3	2.4
Northern Territory(b)	56.0	59.0	63.1	53.4	3.8	3.7	3.6	3.1	3.5	6.1
Australian Capital Territory	43.7	42.7	38.8	46.8	4.2	3.7	3.6	3.6	4.0	2.8
Other Territories(c)	0.6	0.3	0.5	0.5	—	0.1	—	—	—	—
Total	4 789.8	5 258.5	4 714.6	5 109.3	477.7	584.3	466.2	499.7	463.1	391.9

— nil or rounded to zero (including null cells)

(a) Figures for short-term movement are based on a sample and are subject to sampling error. See paragraphs 10 and 11 of Explanatory Notes for more detail.

(b) See paragraph on state where most time spent in Appendix 2.

(c) Includes territories of Christmas Island, Cocos (Keeling) Islands and Jervis Bay.

Note: Components may not sum to totals due to rounding. See paragraph 12 of Explanatory Notes.

Country of birth	CALENDAR YEAR		FINANCIAL YEAR		2004	2005				
	2003	2004	2002-03	2003-04	Dec	Jan	Feb	Mar	Apr	May
	no.	no.	no.	no.	no.	no.	no.	no.	no.	no.
Major group—										
Oceania and Antarctica	16 280	19 180	15 520	17 820	1 930	2 490	1 920	1 950	2 020	1 810
North-West Europe	20 120	20 030	15 360	21 570	1 720	2 100	1 610	2 240	1 730	1 610
Southern and Eastern Europe	4 240	3 640	4 430	3 800	350	290	240	320	300	270
North Africa and the Middle East	11 170	12 370	10 550	11 320	870	730	930	1 150	1 040	1 160
South-East Asia	15 840	17 200	15 280	16 800	1 560	1 280	1 370	1 610	1 300	1 400
North-East Asia	10 370	15 690	10 350	12 600	1 120	1 170	1 380	1 390	1 220	1 090
Southern and Central Asia	11 770	14 100	10 060	12 960	1 300	1 350	1 210	1 450	1 670	1 580
Americas	3 250	3 740	3 240	3 390	380	340	290	340	300	340
Sub-Saharan Africa	10 160	10 860	8 370	10 630	990	1 090	790	1 180	1 040	650
Total(b)	103 890	117 470	93 910	111 590	10 280	10 890	9 780	11 690	10 670	9 940
Selected source countries—										
China (excludes SARs and Taiwan Province)	6 670	11 380	6 660	8 780	750	750	990	1 020	860	740
Fiji	1 700	1 730	1 610	1 600	180	130	150	140	160	130
Hong Kong (SAR of China)	1 080	1 250	1 030	1 130	110	120	110	140	70	80
India	7 220	8 910	5 780	8 140	770	810	750	890	880	840
Indonesia	2 770	2 370	3 030	2 580	180	160	170	150	120	110
Iraq	2 530	1 590	2 820	1 900	110	80	110	130	160	240
Lebanon	1 400	1 380	1 610	1 290	70	90	100	140	170	170
Malaysia	3 510	3 150	2 690	3 720	320	260	230	310	180	300
New Zealand	13 030	15 500	12 370	14 420	1 550	2 120	1 560	1 650	1 660	1 530
Philippines	3 290	4 360	3 190	4 110	330	280	370	450	420	360
Serbia and Montenegro	1 350	740	1 630	930	60	40	50	40	50	40
Singapore	1 950	2 810	1 750	2 220	350	220	270	320	140	240
South Africa	5 620	5 350	4 600	5 850	510	410	400	450	300	240
Sri Lanka	1 610	1 840	1 850	1 550	220	260	150	240	250	200
Sudan	3 760	5 610	2 780	4 590	410	280	480	540	370	420
Taiwan (Province of China)	1 050	850	1 110	880	60	70	70	30	50	30
United Kingdom	16 940	16 820	12 510	18 270	1 420	1 800	1 330	1 950	1 490	1 400
United States of America	1 310	1 500	1 320	1 360	160	140	100	120	100	130
Viet Nam	2 380	2 280	2 570	2 210	220	130	140	210	180	170
Zimbabwe	1 550	1 480	1 200	1 620	120	100	90	110	100	70

(a) See paragraph 7 and 8 of Explanatory Notes.

(b) Includes not stated/inadequately described.

Note: Components may not sum to totals due to rounding. See paragraph 12 of Explanatory Notes.

EXPLANATORY NOTES

INTRODUCTION

1 This publication contains statistics of persons arriving in, and departing from, Australia, together with the major characteristics of travellers. More detailed statistics can be made available on request (see paragraph 28).

SOURCE OF THE STATISTICS

2 Persons arriving in, or departing from, Australia provide information in the form of incoming and outgoing passenger cards (see Appendix 1). Incoming persons also provide information in visa applications, apart from people travelling as Australian and New Zealand citizens. These and other information available to the Department of Immigration and Multicultural and Indigenous Affairs (DIMIA) serve as a source for statistics of overseas arrivals and departures (OAD).

3 In July 1998, DIMIA revised the incoming and outgoing passenger cards and associated procedures as well as computer systems. Following these changes, some questions on the passenger cards were not compulsory and answers to these questions were not checked by Customs officers. The question on marital status was deleted. Data on marital status is now derived from visa applications (only for certain visa classes) and is therefore not available for Australian or New Zealand (NZ) citizens. The changes also affect the data for 'previous country of residence' which is imputed for Australian and NZ citizens. For more information see the May 1998 issue of this publication. Since July 1998, there have been additional minor changes to both incoming and outgoing passenger cards.

4 From July 2001, DIMIA adopted a new passenger card processing system which involved electronic imaging of passenger cards and intelligent character recognition of the data stored in the images. This process has yielded several improvements to the processing of passenger card data, most notably the detailed information about missing values. There have also been several changes to data quality. Information on these changes appears in Appendix 2.

SCOPE

5 The statistics in this publication relate to the number of movements of travellers rather than the number of travellers (i.e. multiple movements of individual persons during a given reference period are each counted separately). The statistics exclude the movements of operational air and ships' crew, of transit passengers who pass through Australia but are not cleared for entry, and of passengers on pleasure cruises commencing and finishing in Australia. Similarly, these statistics exclude unauthorised arrivals.

STATE AND TERRITORY CLASSIFICATION

6 Following the 1992 amendment to the *Acts Interpretation Act* to include the Indian Ocean Territories of Christmas Island and the Cocos (Keeling) Islands as part of geographic Australia, population estimates commencing with the September quarter 1993 include estimates for these two territories. To reflect this change, another category of the state/territory classification has been created, known as Other Territories. Other Territories includes Jervis Bay Territory, Christmas Island and the Cocos (Keeling) Islands. OAD data for Other Territories are not available prior to February 1995.

COUNTRY CLASSIFICATION

7 The classification of countries in this publication is the Standard Australian Classification of Countries. For more detailed information refer to the ABS publication *Standard Australian Classification of Countries* (SACC) (cat. no. 1269.0).

8 The statistics on country of birth, citizenship, residence or main destination have certain limitations because of reporting on passenger cards. For instance, United Kingdom includes England, Scotland and Wales. Similarly Korea includes both the Republic of Korea and the Democratic People's Republic of Korea.

9 A large number of short-term residents departing state Europe as their main destination on the passenger card. These responses are grouped into inadequately described, unless otherwise indicated.

EXPLANATORY NOTES *continued*

ESTIMATION METHOD

10 OAD statistics are derived from a combination of full enumeration and sampling. All permanent movements and all movements with a duration of stay of one year or more are fully enumerated. All movements with a duration of stay of less than one year are sampled. Statistics relating to these movements are therefore estimates which may differ from statistics which would have been obtained if details of all these movements had been processed. Sample standard errors can be found in the Standard Errors section of this publication.

11 Since January 1997 variable sample skips were used in the selection of records to be sampled. Separate skips were applied for each country of citizenship. Over a year about 3.5% of all short-term movements were selected for sampling. However, for operational reasons variable skips across months were ceased from August 2000. From January 2005, 4.9% of all short-term movements have been selected for sample. The skip values correspond to the lowest skip value (i.e. the highest sample selected) for each country from a sample design including individual month and direction of travel as sub-categories.

12 The statistics in this publication have been rounded to the nearest 100 for short-term movements and to the nearest 10 for permanent and long-term movements. The sums of the components may not add to totals due to rounding. Analysis featured in the Key Points and Main Features of this publication is based on unrounded data. Calculations made on rounded data may differ to those published.

CORRECTIONS AND IMPUTATIONS

13 The imprecision due to sampling errors should not be confused with errors arising from imperfections in reporting, which may occur in any data collection, whether sampled or not. Every effort is made to minimise such errors, both through careful design of the passenger cards and through checks on the information once it is received. During the edit process some items are corrected where they conflict with other known information. Missing replies to certain items such as age, state and country of stay/residence are also imputed by reference to other related items. Information on non-response rates and data imputation appears in Appendix 2.

14 Errors of this kind differ from discrepancies arising from the fact that certain information reflects the travellers' intentions at the time the passenger cards were completed. These intentions are, of course, subject to change. Particularly affected is the distinction between permanent and temporary movement and in the latter case, length of intended stay, country in which most time will be spent and main reason for journey.

SEASONAL ADJUSTMENT AND TREND ESTIMATES

15 Seasonally adjusted and trend estimates of short-term overseas movements are shown in tables 1, 2, 3, 4, 7 and 8.

16 Seasonally adjusted estimates are derived by estimating and removing systematic calendar related effects from the original series. In the short-term visitor arrival and short-term resident departure series, these calendar related effects are known as seasonal (e.g. increased travel in December due to the Christmas holiday period) and trading day influences (arising from the varying length of each month and the varying number of Sundays, Mondays, Tuesdays, etc. in each month). Each influence is estimated by separate seasonal and trading day factors which, when combined, are referred to as the combined adjustment factors.

17 From November 2004 ABS has introduced an improved method for removing trading day effects from seasonally adjusted estimates. Corrections for trading day effects are now applied as prior corrections to the original estimates, rather than being applied within the seasonal adjustment process. This is now consistent with the treatment of any corrections for large extremes, changes in level, changes in seasonal pattern, Easter, and other effects. This change in methodology will result in revisions to seasonally adjusted and trend estimates. From July 2003 concurrent seasonal adjustment methodology has

EXPLANATORY NOTES *continued*

SEASONAL ADJUSTMENT AND TREND ESTIMATES *continued*

been used to derive the combined adjustment factors. This means that data from the current month are used in estimating seasonal and trading day factors for the current and previous months. Concurrent seasonal adjustment replaces the forward factor methodology used since seasonal adjustment of short-term visitor arrivals began in 1969 and short-term resident departures in 1976.

18 Concurrent adjustment can result in revisions each month to the seasonally adjusted estimates for earlier periods. However, in most instances, the only noticeable revisions will be to the combined adjustment factors for the current month, the previous month and the same month a year ago. Although there is no specific Information Paper on concurrent adjustment to short-term visitor arrivals or resident departures, more detail on the method in general can be found in the *Information Paper: Introduction of Concurrent Seasonal Adjustment into the Retail Trade Series* (cat. no. 8514.0).

19 Seasonal adjustment procedures do not aim to remove the irregular or non-seasonal influences which may be present in any particular month, such as the effect of major sporting and cultural events, changes in airfares and the fluctuation of the Australian dollar relative to other currencies. Irregular influences that are highly volatile can make it difficult to interpret the movement of the series even after adjustment for seasonal variation. Trend estimates take these irregular influences into account.

20 The trend estimates of short-term overseas visitor arrivals and short-term Australian resident departures are derived by applying a 13-term Henderson-weighted moving average to all months of the respective seasonally adjusted series except the first and last six months. Trend series are created for the last six months by applying surrogates of the Henderson weighted moving average to the seasonally adjusted series.

21 While this technique enables smoothed data for the latest period to be produced, it does result in revisions to the smoothed series, principally of recent months, as additional observations become available. There may also be revisions as a result of the re-estimation of the seasonal factors. For further information, see *A Guide to Interpreting Time Series—Monitoring Trends* (cat. no. 1349.0).

22 A break in the trend series for short-term resident departures from October 2002 has been created because of the effect of the Bali bombing (12 October 2002). This break in trend series has been created both for short-term resident departures to Indonesia and to all short-term resident departures. Another break in the trend series has been introduced from December 2003 in total short-term resident departures and those to Indonesia because of a change in the underlying level of the original series. This change indicates a return to the trend levels experienced prior to the Bali bombing.

23 An improved correction method has been implemented in the seasonal adjustment process, to remove the effects of Chinese New Year from the seasonally adjusted estimates. Chinese New Year often falls in February but on some occasions falls in January. The movement of Chinese New Year between the boundary of January and February can cause biased seasonally adjusted and trend estimates. The previous correction method for Chinese New Year assumed that all of the activity due to the holiday fell in the month in which it started. However, it has been shown that the occurrence of Chinese New Year causes an increase in activity leading up to the holiday period and then a gradual decrease in activity during the holiday period. A proximity correction method has been implemented, which assumes a quadratic increase in activity in the seven days leading up to the holiday and then a quadratic decrease in activity in the six days after the date of Chinese New Year. This method is similar to that used for Easter proximity corrections (Zhang, McLaren, Leung, 2001, *Australian Journal of Statistics*, Volume 43, No. 3).

EXPLANATORY NOTES *continued*

SEASONAL ADJUSTMENT AND TREND ESTIMATES *continued*

24 For a detailed discussion and analysis of OAD time series estimates, see the *ABS Demography Working Paper 2004/2 – Interpretation and Use of Overseas Arrivals and Departures Estimates* (cat. no. 3106.0.55.002), available on the ABS web site.

RELATED PRODUCTS

25 Users of these statistics may also wish to refer to the following ABS products:

- *Short-term Visitor Arrival Estimates, Australia* (cat. no. 3401.0.55.001) – issued monthly
- *Australian Demographic Statistics* (cat. no. 3101.0) – issued quarterly
- *Migration, Australia* (cat. no. 3412.0) – issued annually
- *Overseas Arrivals and Departures, Australia, Time Series Spreadsheets*. These spreadsheets can be accessed electronically by going to the ABS AusStats web site <<http://www.abs.gov.au/ausstats>> and selecting Publications & Data and then Time Series Spreadsheets. Select 34 Migration and then *Overseas Arrivals and Departures, Australia* (cat. no. 3401.0).

26 Related statistics are also published by DIMIA, the Department of Industry, Tourism and Resources and Tourism Research Australia.

27 Current publications and other products produced by the ABS are listed in the *Catalogue of Publications and Products* (cat. no. 1101.0). The Catalogue is available from any ABS office or the ABS web site <<http://www.abs.gov.au>>. The ABS also issues a daily Release Advice on the web site which details the products to be released in the week ahead.

ADDITIONAL STATISTICS AVAILABLE

28 As well as the statistics included in this and related publications, other relevant unpublished data are available for the following variables:

- Citizenship (Nationality)
- Country of birth
- Age (Date of birth)
- Sex
- Marital status (not available for Australian or New Zealand citizens)
- Category of travel
- Permanent migrant
 - Previous/future country of residence
 - State of intended address/lived
- Overseas visitor
 - Intended/actual length of stay
 - Main reason for journey
 - Country of residence
 - State or territory of intended address on arrival
 - State or territory in which most time spent on departure
- Australian residents
 - Intended/actual length of stay overseas
 - Country spent/intend to spend most time abroad
 - State or territory of intended address/state or territory lived
- Occupation (not available for short-term movements)
- Country of embarkation/disembarkation
- Airport/Port of arrival/departure
- Arrival/departure date
- Intention to live in Australia for next 12 months (not available for short-term movements)

REFORMATTED PUBLICATION

29 A number of changes were introduced in the August 2004 issue of this publication. Changes included the introduction of four new tables (tables 3, 4, 7 and 8), a new table structure and a reformatting of the time periods presented in tables 3 to 12. The key figures, key points and main features were also redesigned to give more focus to trend

EXPLANATORY NOTES *continued*

REFORMATTED PUBLICATION *continued*

estimates. For more detail about these changes, refer to the Demography Theme Page on the ABS web site.

ACKNOWLEDGMENTS

30 This publication draws extensively on information provided by DIMIA. This continued cooperation is very much appreciated; without it, the statistics published would not be available. Information received by the ABS is treated in strict confidence as required by the *Census and Statistics Act 1905*.

APPENDIX 1 PASSENGER CARDS

INCOMING CARD - FRONT

<p>■ Incoming passenger card • Australia</p> <p>PLEASE COMPLETE IN ENGLISH WITH A BLUE OR BLACK PEN</p> <p>▶ Family/surname <input style="width: 100%;" type="text"/></p> <p>▶ Given names <input style="width: 100%;" type="text"/></p> <p>▶ Passport number <input style="width: 100%;" type="text"/></p> <p>◆ Flight number or name of ship <input style="width: 100%;" type="text"/></p> <p>▶ Intended address in Australia <input style="width: 100%;" type="text"/></p> <p style="text-align: right;">State <input style="width: 20px;" type="text"/></p> <p>▶ Do you intend to live in Australia for the next 12 months? Yes <input type="checkbox"/> No <input type="checkbox"/></p> <p>▶ If you are NOT an Australian citizen:</p> <p>Do you have tuberculosis? Yes <input type="checkbox"/> No <input type="checkbox"/></p> <p>Do you have any criminal conviction/s? Yes <input type="checkbox"/> No <input type="checkbox"/></p>	<p>YOU MUST ANSWER EVERY QUESTION – IF UNSURE, <input checked="" type="checkbox"/> Yes</p> <p>▶ Are you bringing into Australia:</p> <ol style="list-style-type: none"> 1. Goods that may be prohibited or subject to restrictions, such as medicines, steroids, firearms, weapons of any kind or illicit drugs? Yes <input type="checkbox"/> No <input type="checkbox"/> 2. More than 2250mL of alcohol or 250 cigarettes or 250g of tobacco products? Yes <input type="checkbox"/> No <input type="checkbox"/> 3. Goods obtained overseas or purchased duty and/or tax free in Australia with a combined total price of more than AUD\$900, including gifts? Yes <input type="checkbox"/> No <input type="checkbox"/> 4. Goods/samples for business/commercial use? Yes <input type="checkbox"/> No <input type="checkbox"/> 5. AUD\$10,000 or more in Australian or foreign currency equivalent? Yes <input type="checkbox"/> No <input type="checkbox"/> <hr/> <ol style="list-style-type: none"> 6. Any food - includes dried, fresh, preserved, cooked, uncooked? Yes <input type="checkbox"/> No <input type="checkbox"/> 7. Wooden articles, plants, parts of plants, traditional medicines or herbs, seeds, bulbs, straw, nuts? Yes <input type="checkbox"/> No <input type="checkbox"/> 8. Animals, parts of animals and animal products including equipment, eggs, biologicals, specimens, birds, fish, insects, shells, bee products, pet food? Yes <input type="checkbox"/> No <input type="checkbox"/> 9. Soil, or articles with soil attached, ie. sporting equipment, shoes, etc? Yes <input type="checkbox"/> No <input type="checkbox"/> <hr/> <ol style="list-style-type: none"> ▶ 10. Have you visited a rural area or been in contact with, or near, farm animals outside Australia in the past 30 days? Yes <input type="checkbox"/> No <input type="checkbox"/> ▶ 11. Have you been in Africa or South America in the last 6 days? Yes <input type="checkbox"/> No <input type="checkbox"/>
<p>DECLARATION The information I have given is true, correct and complete. I understand failure to answer any questions may have serious consequences.</p>	<p>YOUR SIGNATURE</p> <p><input style="width: 100%;" type="text"/></p> <p style="text-align: right;">Day <input style="width: 20px;" type="text"/> Month <input style="width: 20px;" type="text"/> Year <input style="width: 20px;" type="text"/></p>
<p>TURN OVER THE CARD </p> <p>English</p>	

INCOMING CARD - BACK

<p>■ YOUR CONTACT DETAILS IN AUSTRALIA</p> <p>Phone <input style="width: 100%;" type="text"/></p> <p>E-mail <input style="width: 100%;" type="text"/></p> <p>OR</p> <p>Address <input style="width: 100%;" type="text"/></p> <p style="text-align: right;">State <input style="width: 20px;" type="text"/></p>	<p>■ EMERGENCY CONTACT DETAILS (FAMILY OR FRIEND)</p> <p>Name <input style="width: 100%;" type="text"/></p> <p>E-mail <input style="width: 100%;" type="text"/></p> <p>Phone <input style="width: 100%;" type="text"/></p> <p>OR</p> <p>Mail address <input style="width: 100%;" type="text"/></p>
<p>PLEASE COMPLETE IN ENGLISH</p> <p>▶ In which country did you board this flight or ship? <input style="width: 100%;" type="text"/></p> <p>◆ What is your usual occupation? <input style="width: 100%;" type="text"/></p> <p>▶ Nationality as shown on passport <input style="width: 100%;" type="text"/></p> <p>▶ Date of birth Day <input style="width: 20px;" type="text"/> Month <input style="width: 20px;" type="text"/> Year <input style="width: 20px;" type="text"/></p>	<p>▶ PLEASE <input checked="" type="checkbox"/> AND ANSWER A OR B OR C</p> <div style="display: flex; justify-content: space-between;"> <div style="width: 30%; border: 1px solid black; padding: 5px;"> <p>A Migrating permanently to Australia <input type="checkbox"/></p> </div> <div style="width: 30%; border: 1px solid black; padding: 5px;"> <p>B Visitor or temporary entrant <input type="checkbox"/></p> <p>Your intended length of stay in Australia Years <input style="width: 20px;" type="text"/> Months <input style="width: 20px;" type="text"/> Days <input style="width: 20px;" type="text"/></p> <p>Your country of residence <input style="width: 100%;" type="text"/></p> <p>Your main reason for coming to Australia (X one only)</p> <p>Convention/conference <input type="checkbox"/> 1 Employment <input type="checkbox"/> 4 Holiday <input type="checkbox"/> 7</p> <p>Business <input type="checkbox"/> 2 Education <input type="checkbox"/> 5 Other <input type="checkbox"/> 8</p> <p>Visiting friends or relatives <input type="checkbox"/> 3 Exhibition <input type="checkbox"/> 6</p> </div> <div style="width: 30%; border: 1px solid black; padding: 5px;"> <p>C Resident returning to Australia <input type="checkbox"/></p> <p>▶ Country where you spent most time abroad <input style="width: 100%;" type="text"/></p> </div> </div> <div style="border: 1px solid black; padding: 5px; margin-top: 5px;"> <p>MAKE SURE YOU HAVE COMPLETED BOTH SIDES OF THIS CARD. PRESENT THIS CARD ON ARRIVAL WITH YOUR PASSPORT.</p> </div>
<p><small>Information sought on this form is required to administer immigration, customs, quarantine, statistical, health, wildlife and currency laws of Australia and its collection is authorised by legislation. It will be disclosed only to agencies administering these areas and those entitled to receive it under Australian law. The leaflet <i>Safeguarding your personal information</i> is available at Australian ports and airports.</small></p>	<p style="font-size: 24px; font-weight: bold; text-align: center;">03051504</p> <p style="text-align: right;"><small>© Commonwealth of Australia 2005 15 (Design date 03/05)</small></p>

Incoming passenger card used from March 2005.

APPENDIX 1 PASSENGER CARDS *continued*

OUTGOING CARD - FRONT

<p>Outgoing passenger card • Australia</p> <p>PLEASE COMPLETE IN ENGLISH WITH A BLUE OR BLACK PEN</p> <p>▶ Family/surname <input type="text"/></p> <p>▶ Given names <input type="text"/></p> <p>▶ Passport number <input type="text"/></p> <p>▶ Flight number or name of ship <input type="text"/></p> <p>▶ Country where you will get off this flight <input type="text"/></p> <p>▶ What is your usual occupation? <input type="text"/></p> <p>▶ Nationality as shown on passport <input type="text"/></p> <p>▶ Date of birth <input type="text"/> Day <input type="text"/> Month <input type="text"/> Year <input type="text"/></p>	<p>▶ PLEASE <input checked="" type="checkbox"/> AND ANSWER D OR E OR F</p> <div style="display: flex; justify-content: space-between;"> <div style="width: 30%;"> <p>D Visitor or temporary entrant departing <input type="checkbox"/></p> <p>▶ State where you spent most time</p> <table style="width: 100%; border: none;"> <tr><td>NSW <input type="checkbox"/></td><td>Vic <input type="checkbox"/></td></tr> <tr><td>Qld <input type="checkbox"/></td><td>SA <input type="checkbox"/></td></tr> <tr><td>WA <input type="checkbox"/></td><td>Tas <input type="checkbox"/></td></tr> <tr><td>NT <input type="checkbox"/></td><td>ACT <input type="checkbox"/></td></tr> <tr><td></td><td>Other <input type="checkbox"/></td></tr> </table> <p>▶ Country of Residence <input type="text"/></p> </div> <div style="width: 30%;"> <p>E Australian resident departing temporarily <input type="checkbox"/></p> <p>▶ In which State do you live?</p> <table style="width: 100%; border: none;"> <tr><td>NSW <input type="checkbox"/></td><td>Vic <input type="checkbox"/></td><td>Qld <input type="checkbox"/></td></tr> <tr><td>SA <input type="checkbox"/></td><td>WA <input type="checkbox"/></td><td>Tas <input type="checkbox"/></td></tr> <tr><td>NT <input type="checkbox"/></td><td>ACT <input type="checkbox"/></td><td>Other <input type="checkbox"/></td></tr> </table> <p style="text-align: center;">Years Months Days</p> <p>▶ Intended length of stay overseas <input type="text"/> OR <input type="text"/></p> <p>▶ Country where you will spend most time abroad <input type="text"/></p> <p>▶ Main reason for overseas travel (<input checked="" type="checkbox"/> one only):</p> <table style="width: 100%; border: none;"> <tr><td>Convention/conference</td><td><input type="checkbox"/> 1</td><td>Employment</td><td><input type="checkbox"/> 5</td></tr> <tr><td>Business</td><td><input type="checkbox"/> 2</td><td>Education</td><td><input type="checkbox"/> 6</td></tr> <tr><td>Visiting friends or relatives</td><td><input type="checkbox"/> 3</td><td>Exhibition</td><td><input type="checkbox"/> 7</td></tr> <tr><td>Holiday</td><td><input type="checkbox"/> 4</td><td>Other</td><td><input type="checkbox"/> 8</td></tr> </table> </div> <div style="width: 30%;"> <p>F Australian resident departing permanently <input type="checkbox"/></p> <p>▶ In which State did you live?</p> <table style="width: 100%; border: none;"> <tr><td>NSW <input type="checkbox"/></td><td>Vic <input type="checkbox"/></td></tr> <tr><td>Qld <input type="checkbox"/></td><td>SA <input type="checkbox"/></td></tr> <tr><td>WA <input type="checkbox"/></td><td>Tas <input type="checkbox"/></td></tr> <tr><td>NT <input type="checkbox"/></td><td>ACT <input type="checkbox"/></td></tr> <tr><td></td><td>Other <input type="checkbox"/></td></tr> </table> <p>▶ What is your country of future residence? <input type="text"/></p> </div> </div> <p style="text-align: center; font-size: small;">DECLARATION <i>The information I have given is true, correct and complete.</i></p> <p>YOUR SIGNATURE <input style="width: 150px;" type="text"/> Day <input type="text"/> Month <input type="text"/> Year <input type="text"/></p> <p style="text-align: right; font-weight: bold;">TURN OVER THE CARD </p> <p style="text-align: right; font-size: x-small;">English</p>	NSW <input type="checkbox"/>	Vic <input type="checkbox"/>	Qld <input type="checkbox"/>	SA <input type="checkbox"/>	WA <input type="checkbox"/>	Tas <input type="checkbox"/>	NT <input type="checkbox"/>	ACT <input type="checkbox"/>		Other <input type="checkbox"/>	NSW <input type="checkbox"/>	Vic <input type="checkbox"/>	Qld <input type="checkbox"/>	SA <input type="checkbox"/>	WA <input type="checkbox"/>	Tas <input type="checkbox"/>	NT <input type="checkbox"/>	ACT <input type="checkbox"/>	Other <input type="checkbox"/>	Convention/conference	<input type="checkbox"/> 1	Employment	<input type="checkbox"/> 5	Business	<input type="checkbox"/> 2	Education	<input type="checkbox"/> 6	Visiting friends or relatives	<input type="checkbox"/> 3	Exhibition	<input type="checkbox"/> 7	Holiday	<input type="checkbox"/> 4	Other	<input type="checkbox"/> 8	NSW <input type="checkbox"/>	Vic <input type="checkbox"/>	Qld <input type="checkbox"/>	SA <input type="checkbox"/>	WA <input type="checkbox"/>	Tas <input type="checkbox"/>	NT <input type="checkbox"/>	ACT <input type="checkbox"/>		Other <input type="checkbox"/>
NSW <input type="checkbox"/>	Vic <input type="checkbox"/>																																													
Qld <input type="checkbox"/>	SA <input type="checkbox"/>																																													
WA <input type="checkbox"/>	Tas <input type="checkbox"/>																																													
NT <input type="checkbox"/>	ACT <input type="checkbox"/>																																													
	Other <input type="checkbox"/>																																													
NSW <input type="checkbox"/>	Vic <input type="checkbox"/>	Qld <input type="checkbox"/>																																												
SA <input type="checkbox"/>	WA <input type="checkbox"/>	Tas <input type="checkbox"/>																																												
NT <input type="checkbox"/>	ACT <input type="checkbox"/>	Other <input type="checkbox"/>																																												
Convention/conference	<input type="checkbox"/> 1	Employment	<input type="checkbox"/> 5																																											
Business	<input type="checkbox"/> 2	Education	<input type="checkbox"/> 6																																											
Visiting friends or relatives	<input type="checkbox"/> 3	Exhibition	<input type="checkbox"/> 7																																											
Holiday	<input type="checkbox"/> 4	Other	<input type="checkbox"/> 8																																											
NSW <input type="checkbox"/>	Vic <input type="checkbox"/>																																													
Qld <input type="checkbox"/>	SA <input type="checkbox"/>																																													
WA <input type="checkbox"/>	Tas <input type="checkbox"/>																																													
NT <input type="checkbox"/>	ACT <input type="checkbox"/>																																													
	Other <input type="checkbox"/>																																													

OUTGOING CARD - BACK

<p>▶ Are you taking out of Australia AUD\$10,000 or more in Australian or foreign currency equivalent? If answered 'Yes' you must complete an International Currency Transfer Report to present with this card. Yes <input type="checkbox"/> No <input type="checkbox"/></p> <p>▶ If you worked in Australia as a temporary resident you may be eligible for a Departing Australia Superannuation Payment (DASP). If you would like to receive further information please provide your e-mail address.</p> <p>For example WILLIAMS_JENNIFER @ HOTMAIL.COM</p> <p><input style="width: 100%; height: 15px;" type="text"/> <input style="width: 100%; height: 15px;" type="text"/></p> <p>Visit www.ato.gov.au/super for more DASP information.</p>	<p>MAKE SURE YOU HAVE COMPLETED BOTH SIDES OF THIS CARD. PRESENT THIS CARD, ON DEPARTURE WITH YOUR BOARDING PASS AND PASSPORT.</p>	
<p style="font-size: x-small;">Information sought on this form is required to administer immigration, customs, quarantine, statistical, health, wildlife and currency laws of Australia and its collection is authorised by legislation. It will be disclosed only to agencies administering these areas and those entitled to receive it under Australian law. The leaflet <i>Safeguarding your personal information</i> is available at Australian ports and airports.</p>	<p style="font-size: large; font-weight: bold;">07031607</p>	<p>© Commonwealth of Australia 2003 16 (Design date 07/03) MCMILLAN PRINT</p>

Outgoing passenger card used from July 2003.

APPENDIX 2 DATA QUALITY ISSUES

SCANNING AND IMAGING	<p>The introduction of a new passenger card processing system from July 2001 has meant that information is now available on the frequency and impact of data item imputation. Much of this information has not been available previously. Additionally, the move to a new processing system has also given rise to new data quality issues directly associated with scanning and imaging.</p>
DEFECTIVE CARDS	<p>There are a small number of unreadable or damaged passenger cards for each month. The Australian Bureau of Statistics (ABS) receives a count of these cards from the Department of Immigration and Multicultural and Indigenous Affairs (DIMIA) by movement direction, box type and port of clearance. The information on these cards is then physically processed by the ABS and included in the estimates presented here.</p>
DURATION OF STAY	<p>From July 1998 DIMIA has been able to determine the actual length of stay for departing overseas visitors and arriving Australian residents which was previously collected from information on intended length of stay supplied on the arrival and departure card by the passenger. This new method has resulted in a change in data distribution with the number of passengers staying for one year exactly declining significantly when compared with movements prior to July 1998.</p> <p>The introduction of the new passenger card processing system from July 2001 has shown further evidence of rounding to exactly one year in intended duration of stay/travel as reported by visitors arriving in Australia and Australian residents departing the country. To reflect the historical movement patterns, the records with a reported duration of exactly one year are allocated to short-term and long-term. For visitors, 75% of such records are allocated to short-term and 25% to long-term. The ratio is 67:33 for residents departing Australia.</p>
TRIPS AND MATCHING OF MOVEMENTS ON THE SECOND LEG OF TRAVEL	<p>Each month there are records for long-term residents returning to Australia and long-term visitors departing Australia which could not be matched with DIMIA's Travel and Immigration Processing System (TRIPS) records. Records which did not match with a passenger card have been created directly from TRIPS and added to the ABS processing system.</p>
NEW ZEALAND CITIZENS	<p>Under the Trans-Tasman Agreement, New Zealand (NZ) citizens are not required to have a visa to travel to Australia. As a result, on arrival in Australia their visa documentation cannot be used to determine whether they are either a permanent migrant or a temporary visitor, or an Australian resident returning from NZ. DIMIA believes that a substantial proportion of holders of NZ passports tick Box A (migrating to Australia) each time they arrive in the country, causing an overcount of NZ migrants entering Australia.</p> <p>The following edits were applied to correct the overcounting of NZ migrants:</p>
<i>July 2001 to June 2002</i>	<p>With the introduction of the new processing system from July 2001, DIMIA coded all NZ citizen arrivals who had ticked Box A and had been to Australia previously (based on immigration records) to resident returning (Box C). If these people were visitors previously, this recoding had the effect of incorrectly reducing the number of NZ migrants whilst at the same time incorrectly increasing the number of NZ citizen returning residents. This problem was overcome by moving the NZ citizens that have been changed by DIMIA from Box A to Box C back to Box A.</p>

APPENDIX 2 DATA QUALITY ISSUES *continued*

July 2002 onwards

From July 2002, DIMIA has introduced a new edit system to ensure accurate Permanent Arrivals of NZ citizens statistics. Where the person ticks Box A on his/her passenger card (first arrival as a migrant) the record is verified by checking previous entries and related passenger card records and if the person is previously recorded as a migrant or resident then they will be counted as returning residents. This will result in more accurate recording of NZ citizens who are migrating to Australia as against those who are residents returning.

NON-RESPONSE

A1 NON-RESPONSE RATES PRIOR TO IMPUTATION (a)—May 2005

	<i>Incoming</i>	<i>Outgoing</i>
<i>OAD Variables</i>	%	%
Citizenship (Nationality)	0.1	—
Country of Birth	0.9	0.6
Age (Date of birth)	—	—
Sex	—	—
Marital Status(b)	38.6	49.8
Category of travel	1.3	0.9
Permanent migrant		
Previous/future country of residence	(c) 35.8	12.0
Overseas visitor		
Intended/actual length of stay	4.3	1.2
Main reason for journey	5.3	. .
Australian residents		
Actual/intended time away from Australia	0.7	3.9
Main reason for journey	. .	3.8
Occupation(d)	8.0	4.9
Country of embarkment/disembarkment	3.4	2.7
Whether intend to live in Australia for next 12 months	15.0	. .

. . not applicable

— nil or rounded to zero (including null cells)

(a) Non-response rates are unweighted.

(b) Not available for Australian or New Zealand citizens.

(c) Not available for short-term movements.

(d) New Zealand passport holders contribute to a large proportion of the non-response rate due to unavailable visa data.

INTENDED LENGTH OF
STAY/TIME AWAY FROM
AUSTRALIA

Non-response rates are available for these data items from November 1998. For data prior to November 1998, imputation carried out as part of processing by DIMIA has prevented reliable estimation of non-response rates for these two data items.

MAIN REASON FOR JOURNEY

Before the introduction of the redesigned passenger card in July 1998, 5% of short-term visitor arrivals, on average, were recorded as having a reason for journey of 'Other' or 'Not Stated'. This percentage rose to 14% for July, 16% in August and 29% in September 1998 as a result of processing problems. These problems have now been addressed by DIMIA, with the percentage of 'Other' and 'Not Stated' dropping in October 1998 to 8% and 7% in November 1998.

From the January 1999 issue of this publication, published figures (table 6 in this issue) referencing these three months were revised. The revised data were calculated by estimating the number of persons responding 'Other/Not Stated' using past trends for each country of citizenship and proportionally allocating any persons in excess of the estimated 'Other/Not Stated' total amongst the remaining categories. 'Not Stated' rates are now separately available from February 1999 onwards.

APPENDIX 2 DATA QUALITY ISSUES *continued*

STATE WHERE SPENT MOST TIME

For the months of August 1998, September 1998 and October 1998, data entry problems experienced by DIMIA caused an overstatement of the Northern Territory as the main state of stay with a corresponding understatement for the remaining states and territories. In November 1998 these numbers returned to levels more comparable with previous years, with DIMIA indicating that they had instigated data quality procedures to address this issue.

From the January 1999 issue of this publication, published figures (table 11 in this issue) referencing these months were revised. The revised data were calculated by estimating the number of persons indicating the Northern Territory as their main state of stay using past trends and proportionally allocating any persons in excess of these estimates amongst the remaining states and territories.

With the introduction of the new processing system from July 2001, DIMIA has provided the ABS with data on all missing values of state of stay and state of usual residence. These missing values are now imputed.

DATA IMPUTATIONS

Data was imputed for non-response for state of stay/residence. For state of stay, non-responses were imputed at the category of traveller and state of clearance level. Non-response rates for state of stay are presented in the table below:

A2 NON-RESPONSE RATES FOR STATE OF STAY BY CATEGORY OF TRAVELLER (a)

<i>Category of traveller</i>	<i>May 2005</i>
	%
Permanent arrivals – settlers	6.7
Long-term residents returning	1.2
Long-term visitors arriving	2.8
Short-term residents returning	0.2
Short-term visitors arriving	5.8
Residents departing permanently	2.6
Long-term residents departing	2.4
Long-term visitors departing	4.3
Short-term residents departing	1.8
Short-term visitors departing	7.5

(a) Non-response rates are weighted.

Non-responses for country of stay and country of usual residence were imputed in two stages. In the first stage, records with country of stay/residence missing were set to country of disembarkation/embarkation if a response was available. In the second stage, for remaining records where country of stay/residence was missing, values were imputed at the category of traveller, reason for journey and country of citizenship level based on responses to other cards within each subgroup. Accordingly, the level of records with data for country of stay/residence not stated has been minimised.

Change in approach to non-response state of stay for long-term visitor departures

A procedure has been applied before prorating of a non-response to state of stay for long-term visitor departures. If a correction to the box marked by a passenger is made (e.g. a visitor marks a resident box), the state of stay recorded in the incorrect box is applied.

Country of stay

Table A3 below presents the percentage of records with country of stay/residence missing as supplied by DIMIA and prior to imputation.

APPENDIX 2 DATA QUALITY ISSUES *continued*

Country of stay *continued*

A3 COUNTRY OF STAY/RESIDENCE NON-RESPONSE RATES BY PASSENGER CARD BOX TYPE(a)

<i>Box type</i>	<i>May 2005</i>
	%
A: Migrating permanently to Australia(b)	35.8
B: Visitor or temporary entrant	4.5
C: Resident returning to Australia	6.9
D: Visitor of temporary entrant departing	5.8
E: Australian resident departing temporarily	1.4
F: Australian resident departing permanently	12.0

- (a) As on initial data supplied by DIMIA.
 (b) New Zealand passport holders contribute to a large proportion of the non-response rate due to unavailable visa data.

Table A4 shows the non-response rates for country of stay/residence following the application of the first stage of imputation.

A4 COUNTRY OF STAY/RESIDENCE NON-RESPONSE RATES BY CATEGORY OF TRAVELLER(a)

<i>Category of traveller</i>	<i>May 2005</i>
	%
Permanent arrivals – settlers	4.3
Long-term residents returning	0.9
Long-term visitors arriving	0.5
Short-term residents returning	0.7
Short-term visitors arriving	0.2
Residents departing permanently	0.9
Long-term residents departing	0.1
Long-term visitors departing	0.7
Short-term residents departing	0.2
Short-term visitors departing	0.1

- (a) Non-response rates are weighted.

SEPTEMBER 1998
PROCESSING

A problem was experienced in the processing of OAD data for movement dates between 6 September 1998 and 16 September 1998, following the introduction of changes to DIMIA's input processing system. This problem may affect in the order of 10% of all September 1998 records used in estimation and result in incorrect details for citizenship, date of birth, sex and country of birth.

PERMANENT ARRIVALS
DURING 1999

The number of permanent arrivals during July to December 1999 were revised in October 2000, as advised by DIMIA.

SEPTEMBER 1999
PROCESSING

September 1999 overseas arrivals and departures data are revised for movements from, and to, China (excl. SARs and Taiwan) and Hong Kong (SAR of China) in respect of three variables: country of birth, country of citizenship and country of residence/stay. Changes to 'country of birth' and 'country of citizenship' have been made from data supplied by DIMIA. Changes to 'country of residence/stay' have been made by assuming the average proportion of country of birth to country of residence/stay for migrants from China (excl. SARs and Taiwan) and Hong Kong (SAR of China) in September 1995 to September 1998.

APPENDIX 2 DATA QUALITY ISSUES *continued*

SEPTEMBER QUARTER 2000 PROCESSING

A processing error was identified which affected the distribution of short-term resident departures by reason for journey for the months of August and September 2000. Affected data was re-processed, and a revised copy of table 3 for the September quarter 2000 was reissued in the supplement October to December 2000 issue of this publication.

CHANGE TO PROCESSING OF INTENDED LENGTH OF STAY

There is evidence to suggest that when completing the intended length of stay question on the incoming passenger card (Box B), some passengers are entering their arrival/departure date or their birth date rather than their intended length of stay.

From September 2003 a rule has been implemented to the data processing system stating that if all three elements are complete (years, months and days), then the intended length of stay is to be coded to a non-response. The ABS currently assigns 'not stated' duration as a short-term movement, however a review of this procedure will be undertaken in the near future.

This procedure changes the prior data processing system which read only the years from the field on the passenger cards. The previous data processing system could have added to overestimation of the number of long-term visitor arrivals.

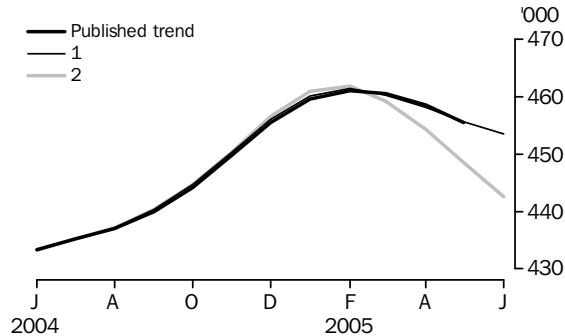
TECHNICAL NOTE TREND REVISIONS

EFFECT OF NEW SEASONALLY ADJUSTED ESTIMATES ON TREND ESTIMATES

1 The most recent trend estimates for short-term visitor arrivals and short-term resident departures are likely to be revised when the next month's seasonally adjusted estimates become available. To assist readers of this publication in analysing short-term movement trends, the approximate effect of two possible scenarios on the previous trend estimate of short-term visitor arrivals and resident departures are presented below.

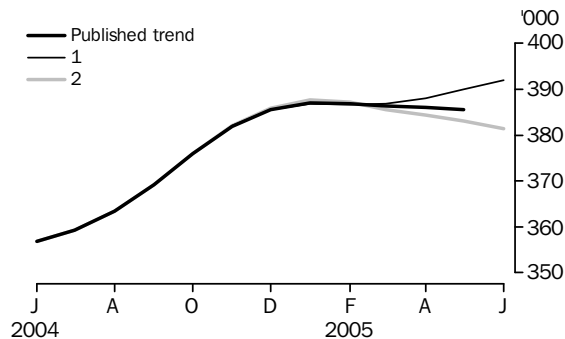
Visitor arrivals

- 1 The May seasonally adjusted estimate of visitor arrivals is 3.2% higher than April.
- 2 The May seasonally adjusted estimate of visitor arrivals is 3.2% lower than April.



Resident departures

- 1 The May seasonally adjusted estimate of resident departures is 3.0% higher than April.
- 2 The May seasonally adjusted estimate of resident departures is 3.0% lower than April.



2 The percentage changes of 3.2 for visitor arrivals and 3.0 for resident departures were chosen because they represent the average absolute monthly percentage change for visitor arrivals and resident departures over the last ten years, respectively.

3 Under concurrent seasonal adjustment, the most recent seasonally adjusted and trend estimates are likely to be revised when original estimates for subsequent months become available. The trend revision is a combined result of the revision of the seasonally adjusted estimates and the revision derived from the use of asymmetric moving averages as future data become available. ABS research shows that about 75% of the total revision to the trend estimate at the current end of the time series is due to the use of different asymmetric moving averages when the original estimate for the next time period becomes available. To assess the reliability of the trend estimate at the current end, the 'what-if' charts present trend estimates under two different scenarios for the next time period. The charts show only the impact due to the changes of the asymmetric moving averages and do not include the unknown impact of revision to seasonal factor estimates that would arise when the original estimate for the next time period becomes available.

STANDARD ERRORS

RELIABILITY OF ESTIMATES

Estimates based on a sample are subject to sampling variability, that is, they may differ from those that would be obtained from full enumeration.

The sampling error associated with any estimate can be estimated from the sample results and one measure so derived is the standard error. Given an estimate and the standard error on that estimate, there are about two chances in three that the sample estimate will differ by less than one standard error from the figure that would have been obtained from full enumeration, and about nineteen chances in twenty that the difference will be less than two standard errors. The relative standard error is the standard error on the estimate expressed as a percentage of the estimate.

It would be impractical to publish estimates of standard errors for all figures in individual tables. However, the following table of standard errors and relative standard errors gives an indication of the magnitude of the sampling error associated with any estimate of a particular size for short-term and total movement.

APPROXIMATE STANDARD ERROR ON ESTIMATES FOR STRATIFIED SAMPLE

<i>Estimated number of movements</i>	SHORT-TERM ARRIVAL OR DEPARTURE OF AUSTRALIAN RESIDENT		SHORT-TERM ARRIVAL OR DEPARTURE OF OVERSEAS VISITOR		TOTAL ARRIVAL OR DEPARTURE	
	<i>Standard error</i>	<i>Relative standard error</i>	<i>Standard error</i>	<i>Relative standard error</i>	<i>Standard error</i>	<i>Relative standard error</i>
	no.	%	no.	%	no.	%
5000000	11 302	0.2	7 934	0.2	9 705	0.2
4000000	10 244	0.3	7 170	0.2	8 796	0.2
3000000	9 021	0.3	6 292	0.2	7 746	0.3
2000000	7 536	0.4	5 233	0.3	6 470	0.3
1000000	5 530	0.6	3 815	0.4	4 745	0.5
500000	4 047	0.8	2 778	0.6	3 469	0.7
100000	1 941	1.9	1 325	1.3	1 658	1.7
50000	1 408	2.8	962	1.9	1 201	2.4
10000	662	6.6	455	4.6	561	5.6
5000	476	9.5	329	6.6	402	8.0
2000	307	15.3	214	10.7	258	12.9
1000	219	21.9	154	15.4	184	18.4
750	191	25.4	135	18.0	159	21.3
500	156	31.3	111	22.3	130	26.1
400	140	35.0	100	25.0	117	29.2
300	122	40.5	87	29.1	101	33.7
200	100	49.8	72	36.0	83	41.3
100	71	70.6	52	51.8	58	58.3

An example of the use of this table is as follows. If the estimate of the number of Australian resident departures for short-term visits abroad is 1,000, then the standard error on this estimate is 219 i.e. there are two chances in three that the actual number of Australian resident departures for short-term visits abroad will lie between 781 and 1,219 and nineteen chances in twenty that it will lie between 562 and 1,438.

The larger the size of an estimate the smaller the relative standard error. For any estimate of greater than 5,000,000 the relative standard error will be less than 0.2%.

The estimate of the difference between an estimate in two different periods, or between different estimates from the same period, is also subject to sampling error. The standard error on the difference between any two estimates which are subject to sampling error can be approximated by using the larger standard error of the estimates inflated by a factor of 1.4.

STANDARD ERRORS *continued*

RELIABILITY OF ESTIMATES *continued*

An example of the use of this procedure is as follows. Assume the estimates of the number of arrivals to Australia from Germany during January 2004 and January 2005 are 7,500 and 10,000 respectively. The difference between the 2004 and 2005 figure is 2,500 and the standard errors on these estimates are approximately 392 and 455. The standard error on the difference is approximately 637 (1.4×455), and there are nineteen chances in twenty that the estimate of the difference between the two years will lie between 1,226 and 3,774.

GLOSSARY

Australian resident	Australian residence is self-defined as reported by travellers when completing Incoming and Outgoing Passenger Cards.
Category of movement	<p>Overseas Arrivals and Departures are classified according to length of stay (in Australia or overseas), recorded in months and days by travellers on passenger cards. There are three main categories of movement:</p> <ul style="list-style-type: none">■ permanent movements■ long-term movements■ short-term movements. <p>A significant number of travellers (i.e. overseas visitors to Australia on arrival and Australian residents going abroad) state exactly 12 months or one year as their intended period of stay. Many of them stay for less than that period and on their departure from, or return to, Australia are therefore classified as short-term. Accordingly in an attempt to maintain consistency between arrivals and departures, movements of travellers who report their intended period of stay as being one year exactly are randomly allocated to long-term or short-term, in proportion to the number of movements of travellers who report their actual length of stay as up to one month more, or one month less, than one year.</p>
Country of residence	Country of residence refers to the country in which travellers regard themselves as living or as last having lived.
Intended length of stay	On arrival in Australia, all overseas visitors are asked to state their 'Intended length of stay in Australia'. On departure from Australia, all Australian residents are asked to state their 'Intended length of stay abroad'.
Long-term arrivals	<p>Long-term arrivals comprise:</p> <ul style="list-style-type: none">■ overseas visitors who intend to stay in Australia for 12 months or more (but not permanently)■ Australian residents returning after an absence of 12 months or more overseas.
Long-term departures	<p>Long-term departures comprise:</p> <ul style="list-style-type: none">■ Australian residents who intend to stay abroad for 12 months or more (but not permanently)■ overseas visitors departing who stayed 12 months or more in Australia.
Main destination	Australian residents travelling overseas are asked on departure for the name of the country in which they intend to spend most time.
Main reason for journey	<p>On arrival in, or departure from, Australia all overseas visitors and Australian residents are asked to state their purpose of journey. From September 1994, all statistics relating to main reason for journey have been published using the following categories:</p> <ul style="list-style-type: none">■ convention/conference■ business■ visiting friends/relatives■ holiday■ employment■ education■ other. <p>In tabulations of data collected before September 1994, the 'Other' category included 'In transit' and the 'Holiday' category included both 'Student vacation' and 'Accompanying business visitor'.</p>
Overseas Arrivals and Departures	Overseas Arrivals and Departures refer to the arrival or departure of Australian residents or overseas visitors, through Australian airports (or sea ports), which have been recorded on Incoming or Outgoing Passenger Cards. Statistics on Overseas Arrivals and Departures relate to the number of movements of travellers rather than the number of travellers (i.e. the multiple movements of individual persons during a given reference period are all counted).

GLOSSARY *continued*

Permanent arrivals	<p>Permanent arrivals (settlers) comprise:</p> <ul style="list-style-type: none">■ travellers who hold migrant visas (regardless of stated intended period of stay)■ New Zealand citizens who indicate an intention to settle■ those who are otherwise eligible to settle (e.g. overseas born children of Australian citizens). <p>This definition of settlers is used by the Department of Immigration and Multicultural and Indigenous Affairs (DIMIA). Prior to 1985 the definition of settlers used by the ABS was the stated intention of the traveller only. Numerically the effect of the change in definition is insignificant. The change was made to avoid the confusion caused by minor differences between data on settlers published separately by the ABS and DIMIA.</p>
Permanent departures	<p>Permanent departures are Australian residents (including former settlers) who on departure state that they intend to settle permanently in another country.</p>
Short-term arrivals	<p>Short-term arrivals comprise:</p> <ul style="list-style-type: none">■ overseas visitors whose intended stay in Australia is less than 12 months■ Australian residents returning after an absence of less than 12 months overseas.
Short-term departure	<p>Short-term departures comprise:</p> <ul style="list-style-type: none">■ Australian residents who intend to stay abroad for less than 12 months■ overseas visitors departing who stayed less than 12 months in Australia.
State where spent most time	<p>Overseas visitors are asked on departure for the name of the state or territory in which they spent the most time. This differs from 'state of clearance' which is available on request.</p>

FOR MORE INFORMATION . . .

- INTERNET* **www.abs.gov.au** the ABS web site is the best place to start for access to summary data from our latest publications, information about the ABS, advice about upcoming releases, our catalogue, and Australia Now—a statistical profile.
- LIBRARY* A range of ABS publications is available from public and tertiary libraries Australia-wide. Contact your nearest library to determine whether it has the ABS statistics you require, or visit our web site for a list of libraries.
- CPI INFOLINE* For current and historical Consumer Price Index data, call 1902 981 074 (call cost 77c per minute).
- DIAL-A-STATISTIC* This service now provides only current Consumer Price Index statistics call 1900 986 400 (call cost 77c per minute).

INFORMATION SERVICE

Data already published that can be provided within five minutes will be free of charge. Our information consultants can also help you to access the full range of ABS information—ABS user pays services can be tailored to your needs, time frame and budget. Publications may be purchased. Specialists are on hand to help you with analytical or methodological advice.

- PHONE* 1300 135 070
- EMAIL* client.services@abs.gov.au
- FAX* 1300 135 211
- POST* Client Services, ABS, GPO Box 796, Sydney NSW 2001

FREE ACCESS TO PUBLICATIONS

All ABS publications can be downloaded free of charge on the ABS web site.

- WEB ADDRESS* www.abs.gov.au



2340100005054

ISSN 1031 0495

RRP \$24.00